

# HYDROLEVEL COMPANY

**PARTS LIST**  
EFFECTIVE JULY 1, 2019

Toll Free Order Desk

**(800) 654-0768**

Phone: (203) 776-0473

FAX: (203) 764-1711

**FUEL SMART**  
**HYDROSTAT**<sup>®</sup>

**Universal Temperature  
Limit, Boiler Reset and  
Low Water Cut-Off**

**HYDROSTAT**<sup>®</sup>

**Universal Temperature  
Limit and  
Low Water Cut-Off**

**Safgard**<sup>™</sup>

**Low Water Cut-Offs,  
Flow Switches and  
Liquid Level Controls**

**CycleGard**<sup>™</sup>

**Low Water Cut-Offs  
for Steam Boilers**

**WAT**<sup>™</sup>

**Water Feeders  
for Steam Boilers**

**AcuTemp**<sup>™</sup>

**Temperature Control**

**HYDROLEVEL  
COMPANY**

126 BAILEY ROAD, NORTH HAVEN, CONNECTICUT 06473 [www.hydrolevel.com](http://www.hydrolevel.com)

## **LIMITED MANUFACTURER'S WARRANTY**

We warrant products manufactured by Hydrolevel Company to be free from defects in material and workmanship for a period of two years from the date of manufacture or one year from the date of installation, whichever occurs first. In the event of any claim under this warranty or otherwise with respect to our products which is made within such period, we will, at our option, repair or replace such products or refund the purchase price paid to us by you for such products. In no event shall Hydrolevel Company be liable for any other loss or damage, whether direct, indirect, incidental or consequential. This warranty is your EXCLUSIVE remedy and shall be IN PLACE OF any other warranty or guarantee, express or implied, including, without limitation, any warranty of MERCHANTABILITY or fitness for a particular purpose. This warranty may not be assigned or transferred and any unauthorized transfer or assignment thereof shall be void and of no force or effect.

# \* APPLICATION CHART

**IMPORTANT:** The application information on this schedule provides a general guideline for selecting Hydrolevel controls. We recommend that you refer to your local and state codes prior to purchasing or installing any limit control.

- 1** Residential / Commercial Hot Water Boiler (160PSI)
- 2** Residential / Commercial Steam Boiler (15PSI)
- 3** Commercial / Industrial Hot Water Boiler (250PSI)
- 4** Commercial / Industrial Steam Boiler – Primary Control (250PSI)
- 5** Commercial / Industrial Steam Boiler – Secondary Control (250PSI)

MODEL NUMBER	VOLTAGE	DESCRIPTION	APPLI-CATION*	PART NO.
--------------	---------	-------------	---------------	----------

## FUEL SMART HYDROSTAT – TEMPERATURE LIMIT, BOILER RESET & LOW WATER CUT-OFF

<b>3150</b> For Oil Boilers	120VAC	Cold Start or Tankless Coil Operation. <ul style="list-style-type: none"> <li>• Adjustable Low Temp: OFF or 110°F to 200°F.</li> <li>• Adjustable High Temp: 100°F to 220°F.</li> <li>• Adjustable Differentials: 10°F to 30°F.</li> </ul> Suitable for mounting on existing immersion well. <b>NOTE:</b> Hydrolevel Electro-Well™ required for low water cut-off operation (see HydroStat Accessories on page 4).	<b>1</b>	45-3150
--------------------------------	--------	--	----------	---------



## HYDROSTAT – TEMPERATURE LIMIT & LOW WATER CUT-OFF

<b>3200-Plus</b> For Gas Boilers	120VAC (24VAC output)	Cold Start or Tankless Coil Operation. <ul style="list-style-type: none"> <li>• Adjustable Low Temp: OFF or 110°F to 200°F.</li> <li>• Adjustable High Temp: 100°F to 220°F.</li> <li>• Automatic Differentials.</li> <li>• Adjustable Economy Settings: Off, Low, 1, 2, 3, 4, or 5 Zone, High.</li> <li>• Outdoor Reset Ready (see Accessories on page 4).</li> </ul> Suitable for mounting on existing immersion well. <b>NOTE:</b> Hydrolevel Electro-Well™ required for low water cut-off operation (see HydroStat Accessories on page 4).	<b>1</b>	48-3200
<b>3250-Plus</b> For Oil Boilers	120VAC	Cold Start or Tankless Coil Operation. <ul style="list-style-type: none"> <li>• Adjustable Low Temp: OFF or 110°F to 200°F.</li> <li>• Adjustable High Temp: 100°F to 220°F.</li> <li>• Automatic Differentials.</li> <li>• Adjustable Economy Settings: Off, Low, 1, 2, 3, 4, or 5 Zone, High.</li> <li>• Outdoor Reset Ready (see Accessories on page 4).</li> </ul> Suitable for mounting on existing immersion well. <b>NOTE:</b> Hydrolevel Electro-Well™ required for low water cut-off operation (see HydroStat Accessories on page 4).		48-3250
<b>3000</b> For Gas Boilers	24VAC	Cold Start Operation. <ul style="list-style-type: none"> <li>• Adjustable High Temp:               <ul style="list-style-type: none"> <li><b>Model 3000:</b> 100°F to 220°F</li> <li><b>Model 3000-190:</b> 100°F to 190°F</li> </ul> </li> <li>• Automatic Differentials.</li> <li>• Adjustable Economy Settings: Off, Low, 1, 2, 3, 4, or 5 Zone, High.</li> </ul> Includes wire harnesses for transformer-type control centers and common integrated ignition controls.           Suitable for mounting on existing immersion well. <b>NOTE:</b> Hydrolevel Electro-Well™ required for low water cut-off operation (see HydroStat Accessories on page 4).		48-3000
<b>3000-190</b> For Gas Boilers	24VAC	Cold Start Operation. <ul style="list-style-type: none"> <li>• Adjustable High Temp:               <ul style="list-style-type: none"> <li><b>Model 3000:</b> 100°F to 220°F</li> <li><b>Model 3000-190:</b> 100°F to 190°F</li> </ul> </li> <li>• Automatic Differentials.</li> <li>• Adjustable Economy Settings: Off, Low, 1, 2, 3, 4, or 5 Zone, High.</li> </ul> Includes wire harnesses for transformer-type control centers and common integrated ignition controls.           Suitable for mounting on existing immersion well. <b>NOTE:</b> Hydrolevel Electro-Well™ required for low water cut-off operation (see HydroStat Accessories on page 4).		48-3001



Model 3200-Plus includes 24 volt 30VA transformer for burner circuit and vent damper.

## HydroStat Universal Replacement – Cross Reference Table

Upgrading existing installations with HydroStat or Fuel Smart HydroStat

**3200-Plus** – Replaces L8124E, L8148E

**3150 & 3250-Plus** – Replaces L7124A, L7124C, L7148A, L7224A, L7224C, L7224U, L7248A, L7248C, L8124A, L8124C, L8148A, L8148C

**3000** – Replaces L4006A, L4080B

**SEE HYDROSTAT ACCESSORIES – PAGE 4**

## HYDROSTAT ACCESSORIES

MODEL NUMBER	PART NUMBER	DESCRIPTION
--------------	-------------	-------------

### ELECTRO-WELL™ (for use with HydroStats to activate LWCO function)

<b>EW-201</b>	48-201	Standard Electro-Well, 3/4" NPT, standard nut
<b>EW-202</b>	48-202	Extended Electro-Well, 3/4" NPT, long nut for tankless coil boilers
<b>EW-203</b>	48-203	3/4" NPT, short insertion depth, standard nut
<b>EW-204</b>	48-204	3/4" NPT, long nut, short insertion length for off-center immersion well tapping in tankless coil plate
<b>EW-205</b>	48-205	3/4" NPT, extra short insertion length for tight inside casting clearance
<b>EW-206</b>	48-206	3/4" NPT, standard insertion depth, long nut (Buderus)
<b>EW-221</b>	48-221	Standard Electro-Well, 1/2" NPT, standard nut
<b>EW-222</b>	48-222	Extended Electro-Well, 1/2" NPT, long nut for tankless coil boilers
<b>EW-223</b>	48-223	1/2" NPT, short insertion depth, standard nut
<b>EW-224</b>	48-224	1/2" NPT, long nut, short insertion length for off-center immersion well tapping in tankless coil plate
<b>EW-225</b>	48-225	1/2" NPT, extra short insertion length for tight inside casting clearance
<b>EW-226</b>	48-226	1/2" NPT, standard insertion length, long nut
<b>48-130-10</b>	48-130-10	Brush for cleaning interior of immersion well



### OUTDOOR SENSOR KITS

<b>OS-100</b>	48-140	Activates Outdoor Reset and Warm Weather Shut-Down on HydroStat models 3200-Plus and 3250-Plus
<b>OS-200</b>	48-145	Wireless Outdoor Sensor Kit – Activates Outdoor Reset and Warm Weather Shut-Down on HydroStat models 3200-Plus and 3250-Plus



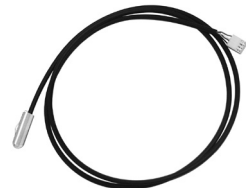
### REMOTE MOUNTING KITS (for HydroStats)

<b>48-101</b>	48-101	Wall/Jacket Mounting Kit with 2' sensor cord.
<b>48-105</b>	48-105	Wall/Jacket Mounting Kit with 3' sensor cord.
<b>48-102</b>	48-102	Wall/Jacket Mounting Kit with 4' sensor cord.
<b>48-103</b>	48-103	Wall/Jacket Mounting Kit with 10' sensor cord.
<b>48-104</b>	48-104	Wall/Jacket Mounting Kit with 20' sensor cord.
<b>48-121</b>	48-121	Pipe Mounting Kit with 4' sensor cord.



### REPLACEMENT SENSORS

<b>48-3250-60</b>	48-3250-60	12" replacement sensor for HydroStat
<b>48-3250-59</b>	48-3250-59	24" replacement sensor for HydroStat
<b>48-3250-67</b>	48-3250-67	3 ft. replacement sensor for HydroStat
<b>48-3250-58</b>	48-3250-58	4 ft. replacement sensor for HydroStat
<b>48-3250-57</b>	48-3250-57	5 ft. replacement sensor for HydroStat
<b>48-3250-56</b>	48-3250-56	10 ft. replacement sensor for HydroStat
<b>48-3250-55</b>	48-3250-55	20 ft. replacement sensor for HydroStat



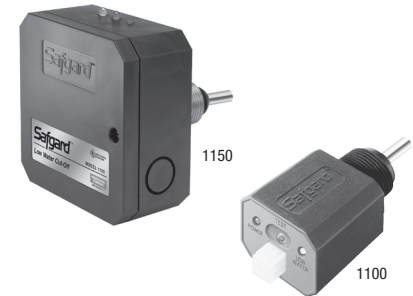
MODEL NUMBER	VOLTAGE	DESCRIPTION	APPLI-CATION*	PART NO.
--------------	---------	-------------	---------------	----------

## LOW WATER CUT-OFFS

### Automatic Reset with Burner Circuit Test Button

**Residential Code Controls** Wire Harnesses also sold separately (see page 8).

<b>1100</b>	24VAC	Compact low water cut-offs for residential boilers. Interrupts power immediately in low water condition. Power and Low Water lights with Test button. 1100 comes with wiring harness for standard fan center.	<b>1</b>	45-1100
<b>1100H3</b>		1100 without wiring harness		45-1103
<b>1100H5</b>		1100 with harness for Weil-McLain Ultra, Lochinvar Knight and Solution		45-1105
<b>1100H7</b>		1100 with harness for connecting vent damper plug on Honeywell and UTC boiler control modules (natural draft models only)		45-1107
<b>1150</b>	120VAC	See description for 1100 (above)		45-1150



### Automatic Reset

<b>24</b>	24VAC	Interrupts power immediately in low water condition. Automatically resets on normal water level. <b>SV</b> models include shorter EL1214-SV probe suitable for mounting in standard black tee.	<b>1</b>	45-240
<b>24SV</b>				45-245
<b>170</b>	120VAC			45-170
<b>170SV</b>				45-175



### Manual Reset

<b>700</b>	24VAC	Interrupts power immediately in low water condition. Manual reset required after 30 seconds. Will not trip out on power failure. <b>SV</b> models include shorter EL1214-SV probe suitable for mounting in standard black tee.	<b>3,5</b>	45-700
<b>700SV</b>				45-701
<b>750</b>	120VAC			45-750
<b>750SV</b>				45-751



### Automatic Reset & Test Button/Light

<b>600</b>	24VAC	Interrupts power immediately in low water condition. Automatically resets on normal water level. Test Button tests control operation. <b>SV</b> models include shorter EL1214-SV probe suitable for mounting in standard black tee. <b>P</b> models include EL1214-P probe with longer nut for boilers with thicker jackets.	<b>1,3</b>	45-600
<b>600SV</b>				45-601
<b>650</b>	120VAC			45-650
<b>650SV</b>				45-651
<b>650P</b>		45-653		



### Manual Reset & Test Button/Light

<b>1100M</b>	24VAC	Compact low water cut-off for wall hung and space constrained applications. Interrupts power immediately in low water condition. Manual reset required after 30 seconds. Will not trip out on power failure. Test button tests control operation. Includes standard wire harness.	<b>1</b>	45-1100M
<b>1100M5</b>		1100M with harness for Weil-McLain Ultra, Lochinvar Knight and Solution		45-1105M
<b>1100M7</b>		1100M with harness for connecting to vent damper plug on Honeywell and UTC boiler control modules (natural draft models only)		45-1107M
<b>500</b>	24VAC	Interrupts power immediately in low water condition. Manual reset required after 30 seconds. Will not trip out on power failure. Test button tests control operation. <b>SV</b> models include shorter EL1214-SV probe suitable for mounting in standard black tee. <b>R</b> models include EL1214-R probe for remote mounting. <b>P</b> models include EL1214-P probe with longer nut for boilers with thicker jackets.	<b>3,5</b>	45-500
<b>500SV</b>				45-501
<b>550</b>	120VAC			45-550
<b>550SV</b>				45-551
<b>550R</b>				45-552
<b>550P</b>				45-553



MODEL NUMBER	VOLTAGE	DESCRIPTION	APPLI-CATION*	PART NO.
--------------	---------	-------------	---------------	----------

### LOW WATER CUT-OFFS – continued

#### Non-Cycling Steam Primary Low Water Cut-Off – 15 Second Delay

400	24VAC	Interrupts power after 15 second delay in a low water condition. Automatically resets on return of normal water level. R models include EL1214-R probe for remote mounting.	2	45-400
400R				45-402
450	120VAC			45-450
450R				45-452



#### CycleGard – 15 Second Delay & Intermittent Level Test with *Smart Cycle*

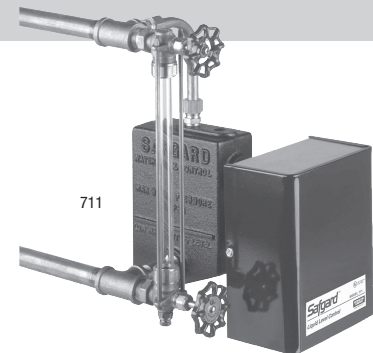
CG400-2090	24VAC	Same as 400 Series described above with foam compensating Intermittent Level Test.	2	45-410-2090													
CG450-1560	120VAC			<b>INTERMITTENT LEVEL TEST</b> <table border="1"> <thead> <tr> <th>Models ending in</th> <th>Frequency of Test</th> <th>Duration of Test</th> </tr> </thead> <tbody> <tr> <td>1560</td> <td>every 15 minutes</td> <td>60 seconds</td> </tr> <tr> <td>2060</td> <td>every 20 minutes</td> <td>60 seconds</td> </tr> <tr> <td>2090</td> <td>every 20 minutes</td> <td>90 seconds</td> </tr> </tbody> </table>	Models ending in	Frequency of Test	Duration of Test	1560	every 15 minutes	60 seconds	2060	every 20 minutes	60 seconds	2090	every 20 minutes	90 seconds	45-460-1560
Models ending in					Frequency of Test	Duration of Test											
1560					every 15 minutes	60 seconds											
2060	every 20 minutes	60 seconds															
2090	every 20 minutes	90 seconds															
CG450-2060	45-460-2060																
CGT450-2060 for tankless coil				45-480-2060													



**Note:** Additional probe options available on above models. Contact factory for part numbers and pricing. CG400-1090 has been replaced by CG400-2090; CG450-1090 has been replaced by CG450-1560

### LOW WATER CUT-OFF / FEEDER COMBINATIONS – For attachment to Gauge Glass Tappings

724WF	24VAC	Includes manifold casting, two probes, quick hook-up fittings, and feed valve assembly.	2 (35 PSI max)	45-724
711WF	120VAC			45-711
724CF	24VAC	As described above – without feed valve assembly.		45-720
711CF	120VAC			45-710



### WATER FEEDERS

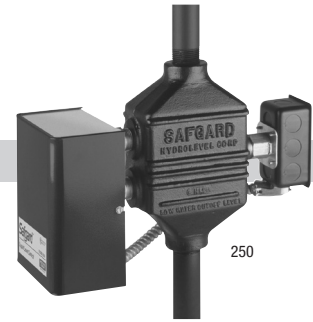
VXT-24	24VAC	Fully programmable delay before feed and feed settings (1 to 5 gallon). Digital feed counter.	2	45-026
VXT-120	120VAC			45-122
VXTC	120VAC	Programmable feeder (45-127) for commercial boilers. Includes water meter (45-130) with 3/4" fittings, Y-strainer and flow restrictor.	4	45-125
VXTC-WF	120VAC			45-127



MODEL NUMBER	VOLTAGE	DESCRIPTION	APPLI-CATION*	PART NO.
--------------	---------	-------------	---------------	----------

### PUMP CONTROLLER / LOW WATER CUT-OFF COMBINATIONS

250	120VAC	Controls boiler feed pump to maintain boiler water level. Provides low water cut-off protection. Includes manifold casting with three model EL1214 probes. <b>WC</b> model includes water column manifold model 1214C-1.	4	45-250
250WC				45-252



### FLOW SWITCHES

FS200	N/A	Replaces Model 44-100. General purpose liquid flow switch, 160 PSI, fits 1" to 6" pipe. General purpose enclosure.	Multi-Purpose	44-200
FS204	N/A	General purpose liquid flow switch, 160 PSI, fits 1" to 6" pipe. NEMA 4 enclosure.	Multi-Purpose	44-204



### WATER METER

WM-1	N/A	General purpose, heavy-duty water meter with 3/4" adaptors rated from .5gpm to 35gpm.	Multi-Purpose	45-130
------	-----	---	---------------	--------



### HI WATER LIMIT & TANK LEVEL / PUMP CONTROLLERS

270SV	120VAC	High water limit control. Interrupts power to pump/feeder in high water condition. Provides alarm contacts. Includes EL1214-SV probe suitable for mounting in standard black tee.	Multi-Purpose	45-270
727	120VAC	Maintains high level. Contacts make to start pump on low level. Includes one EL1214-SV, and one EL1214-RSV probe.	Multi-Purpose	45-727
787	120VAC	Maintains low level. Contacts make to start pump on high level. Includes one EL1214-SV, and one EL1214-RSV probe.	Multi-Purpose	45-787



### ACU-TEMP TEMPERATURE CONTROL

2000	24VAC	Controls water temperature in indirect water heaters. Closely monitors the rate of temperature changes and controls the heating source to minimize fluctuations in tank temperature, while optimizing fuel efficiency. Includes two 90" sensors (1 with 3/8" head; 1 with 1/4" head).	Multi-Purpose	46-2000
------	-------	---	---------------	---------



## PARTS AND ACCESSORIES

MODEL NUMBER	PART NUMBER	DESCRIPTION
--------------	-------------	-------------

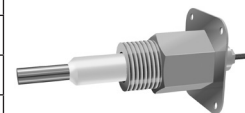
### MANIFOLD FITTINGS

<b>FOEM-1</b>	45-300	1 1/2" x 1 1/2" x 3/4" C.I. Tee 160 PSI Max.
<b>FOEM-2</b>	45-304	1" x 1" x 3/4" C.I. Tee 160 PSI Max.
<b>FOEM-3</b>	45-305	1 1/4" x 1 1/4" x 3/4" C.I. Tee 160 PSI Max.
<b>1" H.P. Tee</b>	45-322	1" x 1" x 3/4" High Pressure Tee (250 PSI Max.) for use with Model EL1214-SV probe
<b>1214C-1</b>	45-301	1" x 1" x (3) 3/4" tappings for probe, sightglass & tri-cocks
<b>1214C-2</b>	45-302	1" x 1" x 3/4" C.I. Tee 250 PSI Max.
<b>250C</b>	45-303	1" x 1" x (3) 3/4" probe tappings. 250 PSI Max.
<b>711C</b>	45-309	(2) 3/4" probe tappings C.I. 35 PSI Max.
<b>711C</b> with fittings	45-310	711C casting as described above w/ quick hook-up fittings for gauge glass attachment.



### PROBES

<b>EL1150</b>	45-210	3/4" NPT, 115/16" inside dimension. For 1150 Series controls.
<b>EL1214</b>	45-214	3/4" NPT, 27/8" inside dimension. Standard ceramic.
<b>EL1214-SV</b>	45-215	3/4" NPT, 21/16" inside dimension. Short ceramic.
<b>EL1214-P</b>	45-226	3/4" NPT, 27/8" inside dimension. Standard ceramic. Long nut (111/16").
<b>EL1214-LSV</b>	45-227	3/4" NPT, 21/16" inside dimension. Short ceramic.
<b>EL1214-R</b>	45-224	EL1214 probe in J-box with metal cover.
<b>EL1220</b>	45-220	1/2" NPT, 27/8" inside dimension. Standard ceramic.
<b>EL1220-R</b>	45-223	EL1220 probe in J-box with metal cover.
<b>EL1220-SV</b>	45-221	1/2" NPT, 21/16" inside dimension. Short ceramic.



### COMMERCIAL/INDUSTRIAL CONTROLS

•Control box only • For field replacement • Probes and manifolds not included

<b>711-CO</b>	45-713	Low water cut-off. 120 VAC, 60 Hz. Supply Voltage.
<b>724-CO</b>	45-726	Low water cut-off. 24 VAC, 60 Hz. Supply Voltage.
<b>250-CO</b>	45-260	Low water cut-off. 120 VAC, 60 Hz. Supply Voltage.

### PARTS

<b>45-531-54</b>	45-531-54	Standard wire harness for Model 1100 LWCO
<b>45-347</b>	45-347	Wire harness for connecting Model 1100 to Burnham PVGA, PVCGA, Series 2, New Yorker CG-D
<b>45-348</b>	45-348	Wire harness for connecting Model 1100 to UTC Boiler Control Module
<b>45-349</b>	45-349	Wire harness for connecting Model 1100 to Lochinvar Knight and Solution, Weil-McLain Ultra
<b>45-350</b>	45-350	Wire harness for connecting Model 1100 to Burnham CHG, SCG, PVG, Crown Bimini
<b>45-353</b>	45-353	Wire harness for connecting Models 1100 and 1100M to vent damper plug on boiler control modules
<b>KUP-11A15</b>	45-337	Plug-in relay, DPDT for 250,967,727,787 controls
<b>KUP-14A15</b>	45-338	Plug-in relay, 3PDT for 711,724 controls
<b>45-024-66</b>	45-343	24 VAC Feed Valve Assembly
<b>45-120-66</b>	45-344	120 VAC Feed Valve Assembly
<b>45-725</b>	45-725	24 VAC Feed Valve Assembly in J-Box (for 724 Series Control)
<b>45-715</b>	45-715	120 VAC Feed Valve Assembly in J-Box (for 711 Series Control)

**HYDROLEVEL  
COMPANY**

126 BAILEY ROAD, NORTH HAVEN, CONNECTICUT 06473 [www.hydrolevel.com](http://www.hydrolevel.com)