



BASO Gas Products LLC

Model C107U-1 Universal Direct Spark Ignition

Description

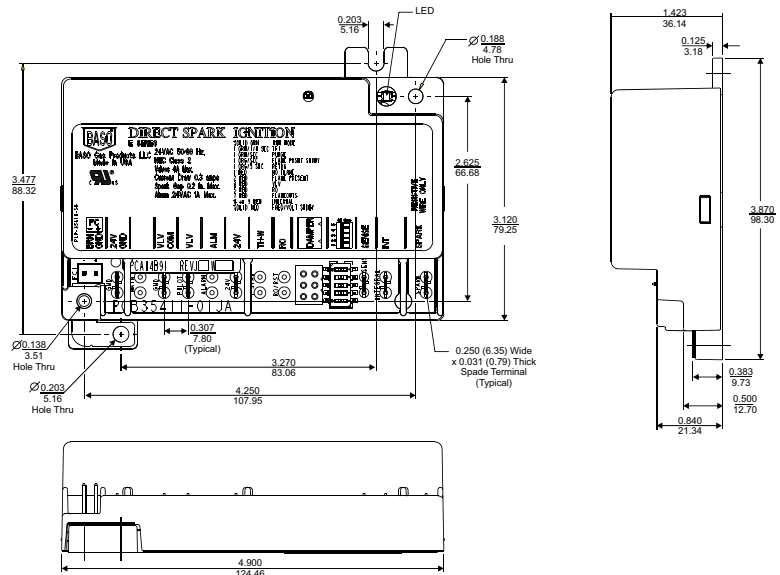
The C107U-1 replaces many Honeywell, Fenwal, Johnson Controls, ICM, White Rodgers and BASO direct spark ignitions. The C107U-1 is a dual micro-processor-based, up-to-date hardware that meets the latest US 60730.1, UL 60730.2-5 and ANSI Z21.20-2014 standards. The microprocessor provides reliable software control of all timings and operates a diagnostic three-color LED (light-emitting diode). The C107U-1 provides ignition sequence, flame monitoring and safety shutoff for direct spark applications like commercial cooking, boilers, furnaces and other heating appliances. Accessories included are Rajah (spark plug) male to female 1/4" terminal and wire nuts.

Default settings:

- Trial for ignition: 1 @ 4 seconds
- Pre-purge: 0 seconds
- Retry: none with reignition
- Inter-purge: 0 seconds
- Flame sense: remote or integral
- DIP switch selectable: preprogrammed with 27 of the most popular timings
- Warranty: 2 years

Agency Listing

- UL Certification number: 20160601-MH2926
- Design file MH2926 UL 60730-1, UL 60730.2-5
- Software conforms to UL 60730 requirements
- EC Type Examination Certification number EC-657989 EN 298:2012



Dimensions (in./mm)

Selection Chart

Ignition Type	Replaces	Interwaiting (Retry) Seconds	Waiting (Pre-Purge) Seconds	Safety (Trial for Ignition) Seconds	Flame Loss [F/L] Response (Interpurge) Seconds	Sensing	Lockout
IPI	EAA1000000010-1C	0	0	1 @ 10	0	Integral	Volatile
IPI	EBC90150000025-1C	15	0	9 @ 25	0	Remote	Volatile
IPI-UNN	ECA90150000025-1C	15	0	9 @ 25	0	Remote/Integral	Volatile
IPI-UNN	ECA930015000025-1C	300	0	9 @ 25	15	Remote/Integral	Volatile

Notes: Volatile Lockout — Reset the power to the module.

Non-volatile Lockout — Requires a reset button wired to the reset tab of the module.

Resistive spark wire harness available. See page 108.

*Check availability with BASO.

C107U Universal Direct Spark Pilot Ignition Control Cross Reference

Honeywell	BASO	White Rodgers	FENWAL	Johnson Controls	Robertshaw
S87B1008	BG1100M0AB-1AC	50D20-150	35-605903-223	G760AAC-1	DS845708-504
S87B1016	BG1100M0AK-1GC	50D20-152	35-605950-015	G760AAD-1	790-300
S87B1024	BG1100M0DL-1GC	50D20-160	35-605954-105	G760AAD-2	790-301
S87B1065	BG1100M3AK-1AC	50D20-162		G760ACA-1	790-314
S87C1014	BG1100MAAK-1GC	50D20-170		G760BAD-1	790-319
S87C1030	BG1100MAAL-1GC	50D20-180		G760BAD-2	790-325
S87D1004	BG1100MADL-1GC	50D20-250		G760BBD-1	
S87C1006	BG1100MCLD-1GC	50D20-350		G760BCD-1	
S87D1012	BG1100M0CK-1GC	50D20-50		G760CAD-1	
S87D1020		50D20-51		G765BAD-1	
S87D1061		50D2052		G765BAD-1R	
S87D1038		50D21-1		G765BCA-12	
S87J1026		50D50-842		G765BCA-12R	
S87J1034					
S87K1008					
S87K1016					