



**2011-2012  
Application Selection and  
Cross-Reference Guide**

## Support



### Online Tools

Find everything you need to be successful in selling Honeywell products online. Product information, cross-references, demos and more are available at [customer.honeywell.com](http://customer.honeywell.com).



### Customer Service

Honeywell provides toll-free access to product application, installation and support experts.

Technical Support: 1-800-468-1502

Customer Service: 1-888-793-8193

### Training

Honeywell offers a variety of on-site and web-based training options at [customer.honeywell.com](http://customer.honeywell.com).



### Rewards

Make your business count with Honeywell's Contractor PRO™ Program. Honeywell's Contractor PRO program gives contractors reward points (\$) back on Honeywell purchases. Visit [www.contractorpro.com](http://www.contractorpro.com) for more information.

### Sales Literature

With Honeywell, you'll have access to sales materials that you can use to help grow your business. Visit [literature.honeywell.com](http://literature.honeywell.com).

### Phone:

Residential Technical Support:  
1-800-468-1502

Sales Support: 1-800-328-5111

Customer Service: 1-888-793-8193

Residential Zoning: 1-800-828-8367

### Online:

[www.customer.honeywell.com](http://www.customer.honeywell.com)

[www.forwardthinking.honeywell.com](http://www.forwardthinking.honeywell.com)

[www.literature.honeywell.com](http://www.literature.honeywell.com)

### Contractor PRO:

Phone: 1-800-919-4835

Fax: 1-800-745-4999

Exclusive Technical Support  
for Contractor PRO members:  
1-877-880-3383

[www.contractorpro.com](http://www.contractorpro.com)

## Table Of Contents

	<u>PAGE</u>
Residential Combustion Overview	4
New Products	6
<b>GAS CONTROLS</b>	
Gas Valves	8
SmartValve™ System Controls	12
Ignition Modules	16
Glowfly® Universal Hot Surface Igniter	20
Thermocouples/Thermopiles	22
Universal Electronic Fan Timer	24
Universal Integrated Furnace Control	26
Fan and Limit Controls	30
<b>OIL/HYDRONIC CONTROLS</b>	
Oil Primaries	32
Outdoor Reset	36
Aquastats®	38
<b>HEATING/COOLING DEVICES</b>	
Relays/Contactors/Transformers	44

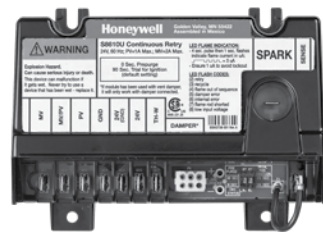
# Residential Combustion

Honeywell Residential Combustion is the industry leader in combustion controls for applications including warm air furnaces, boilers, water heaters, hearth, pool and spa heaters, and service parts.

Our products are used on appliances utilizing natural gas, propane, heating oil, and electric fuels and first and foremost assure the safe operation of heating and cooling appliances. Sold primarily through OEM

and wholesale channels, our family of products has both the largest breadth and depth of offering in the HVAC industry.

Our offerings include like-for-like replacement parts and a full line-up of universal products that cover almost any application, making Honeywell the only brand of replacement parts you'll ever need. The pages in this guide feature our universal products and exciting new offerings for the upcoming heating season!



## Universal Products

The only thing we can't replace is you! In the HVAC industry today time is money, particularly in the service department, and time lost is money lost. Every time your tech can't complete a job, you could lose money. Every time the tech has to head to the supply house, you could lose money. Every time the tech can't make it to that last call of the day because of extra trips to the supply house, you could lose money. With a parts strategy that includes Honeywell's Universal product portfolio you'll have the right part and you'll make more money nearly every time!



The stocking recommendations included in this guide are shown by regional area, U.S. and Canada, and are averaged by product sales. They should be adjusted accordingly to your business size and needs.

RESIDENTIAL COMBUSTION UNIVERSAL PRODUCTS RECOMMENDED INVENTORY GUIDE										
Product Line	Universal Service Part	U.S. NorthEast	U.S. Mid-Atlantic	U.S. North-NW	U.S. South-SE	U.S. West	Canada Eastern	Canada Central - West	Direct Service Part Replacement (Gas Valves)	
										RECOMMENDED BRANCH INVENTORY
Ignition Controls	S9200U1000	10	10	10	10	10	6	6		
	S8610U3009	24	24	24	12	12	24	24		
	S8910U1000	10	10	10	3	6	6	6		
	Y8610U4001	4	4	4	2	6				
	Y8610U6006	6	6	6	2	6	2	2		
Igniters	Q3200U1004	20	20	20	20	20	20	20		
	Q3200U2002	6	6	6	6	6	6	6		
Warm Air Limit	ST9120U10011	12	12	12	6	6	12	8		
Thermo-couple	Q340A1090 (U.S.)	100	100	100	20	20	100	100		
	Q340A1439 (Canada)									
Gas Valves	VR8200A2744	12	12	12	6	6			VR8200A2124 VR8200A2132	
	VR8200A2322 (Canada)						6	10		
	VR8200H1236 (Canada)						12	12		
	VR8345M4302	12	12	12	6	8	8	12	VR8304M3509 VR8304M4507 VR8305M3506	
	VR8300A4516	12	12	12	3	6	4	6	VR8300A4508 VR8300A3500 VR8204A2076 VR8204M1091 VR8205A2024 VR8205H1003 VR8304H4503	
	VR8245M2530	3	3	6	2	2	6	8		
	VR8345H4555	3	3	3	2	2	2	2		
	VR8345Q4563	2	2	2	NA	NA	1	2	VR8205Q2555 VR8304Q4511 VR8305Q4500	
	VS820A1088	6	6	6	NA	3	4 (VS820A1054)	6 (VS820A1054)	VS820A1054 VS820A1336	
	Hydronic Controls	L7224U1002	18	18	2	NA	NA	12	8	
		L7224R1000	18	18	2	NA	NA	12	8	
		W8735S1000	18	18	2	NA	NA	12	8	
		W8735S1008	18	18	2	NA	NA	12	8	
Oil Controls	R7284U1004	10	10	4	NA	NA	12	4		

# New for 2011-12

As an industry leader in innovation and new product development Honeywell is always working to provide solutions that make your job easier and more profitable. This heating season we are improving our line of products in the residential combustion market place. The legendary R7284 Universal Digital Electronic Oil Primary offers technicians a field configurable Universal control with intelligent diagnostics that improve system troubleshooting and reduce unnecessary part swapping. The S8610 Universal Intermittent Pilot Ignition Module got a facelift in 2010. The revamped control features direct pilot flame current readout, a simplified timing lock in mechanism and easier to read trouble codes. The S9200 Universal Integrated Furnace Control replaces over 140 furnace boards and includes a complete set of wiring harnesses for universal compatibility and simplified installation. The LED indicators provide system status, performance and diagnostic information. The Honeywell AquaReset® offers homeowners with oil fired hydronic heating systems energy savings in a simple to install offering for the technician. Glowfly® the Universal Hot Surface Igniter was the buzz last year with its one-of-a-kind six pack offering and visual cross-reference making it a must-have for any service truck. Look for the new, updated packaging for Honeywell's Universal Products. The color packaging includes product specs and easy cross-referencing to make your job easier.



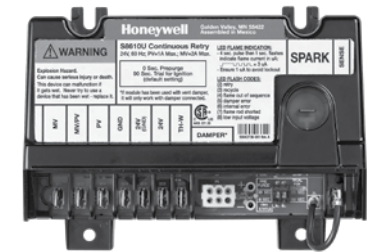
## R7284 Universal Digital Electronic Oil Primary

After decades of setting the industry standard the time has come for a new Digital Universal Electronic Oil Primary. Its analog predecessor is a living legend—and Honeywell has taken it further—with a new integrated digital Quick-Fix Indicator for easy diagnostics and programming. The new case design provides an optimum viewing angle for the multi-lingual display along with providing increased wiring space in the junction box. The redundant burner relay and watchdog circuits make this control more reliable than ever before. Simply put, it takes a legend to make one™.



## S8610 Universal Intermittent Pilot Ignition Module

The best just got better. The updated version of the S8610U will give improved performance in challenging applications and simplify troubleshooting on service calls. Technicians will be able to get direct flame current readout with a standard micro-ammeter and quickly be able to determine flame strength direct from the board. A single LED shows device status along with error codes that have been simplified to allow for faster troubleshooting. It's everything you've come to expect from the Universal control with a whole lot more.



## Glowfly®

Introducing the Honeywell Glowfly, It's a whole new species. Replacing over 110 installed silicon carbide models, with a superior universal bracketing design, one of a kind visual cross-reference packaging and it's made from next generation OEM quality Silicon Nitride the Glowfly is the only igniter you will need. Pick up a six pack and light up your igniter business!



# Gas Valves

Honeywell has taken the guesswork out of gas valve selection with our complete line of universal gas valves. Contractors appreciate the reliability, ease of installation and time saved by carrying a select few gas valves on their truck. Carrying a few Honeywell Universal gas valves on each truck reduces the amount of inventory needed while still making sure technicians can complete the job in one trip. Honeywell's tried and tested gas valves ensure you will be getting the best product available on the market, every time.

When selecting a gas valve for your next job, look for these Honeywell features:

- Universal application
- Reduced inventory
- Easy installation and adjustments
- Compact design



## VR8345M/VR8345Q/VR8345H/ VR8245M

### Universal Electronic Ignition Gas Valve

- Wide-capacity control for almost any IP, HSI or DSI gas-fired appliances
- Compact fit simplifies field replacement
- Use with 24 Vac heating appliances, using natural, manufactured or LP gas
- Use the VR8345Q for a two-stage application, VR8345M for a standard and VR8345H for a slow-opening application
- Capacities from 20 to 200 (VR8245) cfh or 30 to 415 (VR8345) cfh



## VR8300/VR8200

### Universal Standing Pilot Gas Valve

- Combination gas controls for use in 24 Vac, gas-fired, standing pilot appliances with capacities from 20 to 200K Btu/h natural gas, 400 to 200K Btu/h LP gas
- Includes safety shutoff, manual valve, two automatic operators, pressure regulator and pilot adjustment
- Universal replacement for virtually all Honeywell and competitive standing pilot valve models



## VS820

### Millivolt Combination Gas Valve

- Self-powered automatic control
- Use with 750 mV pilot generator
- Easy to install and service with all the adjustments and connections accessible from the top of the control
- 34 to 425 cfh capacity



# Gas Valves Selection Guide

TRADE REPLACEMENTS (Double-Check Specifications Before Replacement)		SPECIFICATIONS				ACCESSORIES		
Universal Service Part	Direct Service Part Replacement	Opening Characteristics (standard, step)	Inlet/Outlet Size (in.)	Pressure Regulator Setting (psi)	Temperature Range	Includes		
						Q340 Thermocouple	3/4" x 1/2" Reducer Bushing	Natural to LP Conversion Kit
VR8300A4516	VR8300A4508	Standard	3/4 x 3/4	3.5 in. wc (0.87 kPa)	0° to 175° F (-18° to 79° C)	None	Two	One
	VR8300A3500	Standard	1/2 x 3/4	3.5 in. wc (0.87 kPa)	0° to 175° F (-18° to 79° C)	None	One	One
	VR8300A4516	Standard	3/4 x 3/4	3.5 in. wc (0.87 kPa)	0° to 175° F (-18° to 79° C)	One	Two	One
VR8245M2530	VR8204A2076	Standard	1/2 x 1/2	3.5 in. wc (0.87 kPa)	0° to 175° F (-18° to 79° C)	None	None	One
	VR8204M1091	Standard	1/2 x 1/2	3.5 in. wc (0.87 kPa)	-40° to 175° F (-40° to 79° C)	None	None	One
	VR8205A2024	Standard	1/2 x 1/2	3.5 in. wc (0.87 kPa)	0° to 175° F (-18° to 79° C)	None	None	One
	VR8245M2530	Standard	1/2 x 1/2	3.5 in. wc (0.87 kPa)	-40° to 175° F (-40° to 79° C)	None	None	One
VR8345H4555	VR8205H1003	Slow	1/2 x 1/2	3.5 in. wc (0.87 kPa)	0° to 175° F (-18° to 79° C)	None	None	None
	VR8304H4503	Slow	3/4 x 3/4	3.5 in. wc (0.87 kPa)	0° to 175° F (-18° to 79° C)	None	None	One
	VR8345H4555	Slow	3/4 x 3/4	3.5 in. wc (0.87 kPa)	0° to 175° F (0° to 79° C)	None	Two	One
VR8345M4302	VR8304M3509	Standard	1/2 x 3/4	3.5 in. wc (0.87 kPa)	-40° to 175° F (-40° to 79° C)	None	One	One
	VR8304M4507	Standard	3/4 x 3/4	3.5 in. wc (0.87 kPa)	-40° to 175° F (-40° to 79° C)	None	Two	One
	VR8305M3506	Standard	1/2 x 3/4	3.5 in. wc (0.87 kPa)	-40° to 175° F (-40° to 79° C)	None	One	One
	VR8345M4302	Standard	3/4 x 3/4	3.5 in. wc (0.87 kPa)	-40° to 175° F (-40° to 79° C)	None	Two	One
VR8345Q4563	VR8205Q2555	2-Stage	1/2 x 1/2	1.7 in. wc Low Fire; 3.5 in. wc High Fire	-40° to 175° F (-40° to 79° C)	None	None	One
	VR8304Q4511	2-Stage	3/4 x 3/4	1.7 in. wc Low Fire; 3.5 in. wc High Fire	-40° to 175° F (-40° to 79° C)	None	Two	One
	VR8305Q4500	2-Stage	3/4 x 3/4	1.7 in. wc Low Fire; 3.5 in. wc High Fire	-40° to 175° F (-40° to 79° C)	None	One	One
	VR8345Q4563	2-Stage	3/4 x 3/4	1.7 in. wc Low Fire; 3.5 in. wc High Fire	-40° to 175° F (-40° to 79° C)	None	Two	One
VR8200A2744	VR8200A2124	Standard	1/2 x 1/2	3.5 in. wc (0.87 kPa)	0° to 175° F (-18° to 79° C)	One	None	One
	VR8200A2132	Standard	1/2 x 1/2	3.5 in. wc (0.87 kPa)	0° to 175° F (-18° to 79° C)	None	None	One
	VR8200A2744	Standard	1/2 x 1/2	3.5 in. wc (0.87 kPa)	0° to 175° F (-18° to 79° C)	None	None	One
VS820A1088	VS820A1054	Standard	3/4 x 3/4	3.5 in. wc (0.87 kPa)	32° to 175° F (0° to 79° C)	None	Two	None
	VS820A1336	Standard	3/4 x 3/4	10.0 in. wc (2.49 kPa)	32° to 175° F (0° to 79° C)	None	Two	None
	VS820A1088	Standard	3/4 x 3/4	3.5 in. wc (0.87 kPa)	32° to 175° F (0° to 79° C)	None	Two	One

**Notes:**

All piloted valves have a 1/4" compression fitting.  
 All the VR valves come set for natural gas, but can be converted to LP gas.  
 The VS820A1054 is for natural gas. The VS820A1336 is for LP gas.  
 All the VR valves have inlet and outlet pressure taps. The VS820 valves have just an outlet pressure tap.

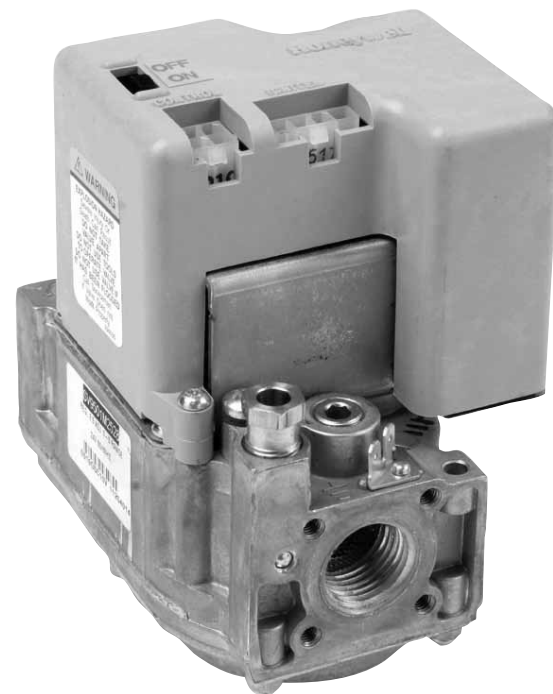
ACCESSORIES			COMPETITIVE REPLACEMENT		
Includes			Honeywell	White-Rodgers	Robertshaw
3/4" Straight Flange	1/2" x 3/8" Reducer Bushing	Remote Rod Adapter			
None	None	None	VR8300A4003, VR8300A4011, VR8300A4037, VR8300A4045, VR8300A4557, VR8300A4565	36C01-405	700-400, 720-406 (7200ER)
None	None	None	VR8300A3104, VR8300A3120, VR8300A3153, VR8300A3161, VR8300A3203, VR8300A3559, VR8300A3567, VR8300A3575	36C03-300, 36C03-400, 36C03-433, 36C03-258	720-404 (7200ER) 720-403, 720-400, 720-402
None	None	None	VR8300A4003, VR8300A4011, VR8300A4037, VR8300A4045, VR8300A4557, VR8300A4565		700-400
One	One	None	VR8204A1201, VR8204A1219, VR8204A2001, VR8204A2175, VR8204A2803, VR8204A2225		
One	One	None	VR8204M1075	36E01-204, 36E01-205, 36E01-206, 36E01-305, 36E93-304	722-079 (2000IPERHC)
One	One	None	VR8205A2008	36G22-214, 36J22-214	722-051 (2000DERHC), 720-051
None	One	None	VR8205M1106, VR8205M2310, VR8205M2443, VR8205M2450, VR8205M2476	36E36-304, 36E22-214	720-079 (7200IPER), 720-080 (7200IPER-LP)
None	None	None	VR8305H4013, VR8305H4039, VR8205H2605		
None	None	None	VR8204H1006, VR8204H1055		720-070 (7200IPER-S7C), 720-071 (7200IPER-S7C), 720-072 (7200IPER-S7C), 720-073 (7200IPER-LP-S7C)
None	None	None		36E98-304, 36E24-214, 36E52-214	700-052
None	None	None			
None	None	None	VR8304M4002		
One	None	None	VR8305M4066, VR8305M4165, VR8305M4231	36G22-214, 36C68-423	720-051 (7200DER)
None	None	None		36E36-304, 36C68-423, 36H32-423	
None	One	None	VR8205Q2662, VR8205Q2746, VR8205Q2787, VR8205Q2381	36E54-214	
None	None	None	VR8304Q4453	36C76-406, 36C76-420, 36C76-463	
None	None	None	VR8305Q4138, VR8305Q4146	36D13-208, 36G54-214	
None	None	None		36E96-314, 36D13-405	720-082 (7200IPER2-4)
One	One	None	VR8200A2116, VR8200A2264, VR8200A2322*		720-400 (7200ER), 720-402 (7200ER)
One	One	None			
One + One Elbow	One	None	VR8200A2322*		
None	One	None	VS820A1005, VS820A1013, VS820A1047, VS820A1278, VS820A5204, VS820A1922	36C03U-300, 36C03U-333, 36C03U-400, 36C03U-433	
None	One	None	VS820A1211, VS820A1740, VS820A1120, VS820A1898, VS820A1872, VS820A1906		
None	One	Yes	VS820A1807, VS820A2003, VS820A1815, VS820A1039, VS820A2011		

\*Canadian Numbers

For a complete cross-reference, visit [www.customer.honeywell.com](http://www.customer.honeywell.com)

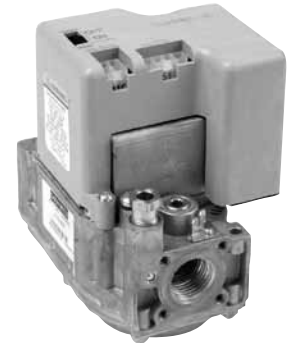
# SmartValve™ System Controls

Honeywell SmartValve™ combines gas flow control and electronic ignition into a single unit, providing safety and simplified wiring and appliance construction. You'll find Honeywell SmartValves on equipment ranging from furnaces, water heaters, boilers and rooftops to infrared heaters, cooking units and much more.



## SmartValve™

- Family members cover the full range of opening characteristics (slow, normal, fast) and ignition systems (hot surface, hot surface pilot)
- Universal kits include natural to LP conversion and 3/4" to 1/2" bushings
- Universal family increases service efficiency and reduces truck and warehouse inventory



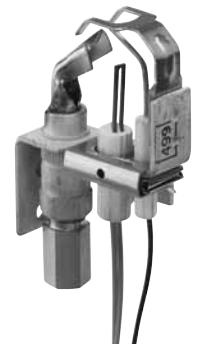
\* Diagnostic Testers  
Flame Current Kit #395466  
Input Voltage Harness #396085

## Q3450C1185/Q3450C2092

### SmartValve Pilot Burner

The Q3450 SmartValve pilot burners provide pilot flame ignition and sensing for SmartValve intermittent pilot systems. They consist of replaceable igniter-flame rod assembly, bracket assembly, pilot target, ground electrode, orifice assembly, compression fitting and spring clip. The igniter lights the pilot burner. The flame rod proves the pilot flame and the pilot flame lights the main burner.

- Used with SV9500/SV9600 SmartValve™ System.
- Replaceable Igniter-Flame Rod Assembly (Q3400A).
- Integral keyed plug provides quick, convenient connection of igniter and sensor to SV9500/SV9600.
- Q3450 has front or 20 degree right, left flame pattern.
- Natural and LP gas orifices available.
- Variety of target styles available.
- Variety of mounting brackets available.



## Q3400

### Hot Surface Pilot/Sensor Assembly

The Q3400A Igniter-Flame Rod Assembly replaces the original igniter-flame rod assembly in the Q3450 and Q3480 pilot hardware used with the SV9500 and SV9600 SmartValve system. The Q3400A has a unique keyed plug connector that will only fit the SV9500/SV9600 systems.

- Can be replaced without removing the pilot burner
- Max temp 250° C
- Order SKU Q3400A1024



# SmartValve™ Control Systems Selection Guide

Ignition/Application	Universal Service Part	Gas Type	Opening Characteristics	Ambient Temperature Range	SPECIFICATIONS			
					Includes			
					Natural to LP Conversion Kit	3/4" x 1/2" Reducer Bushings		
HSI Water Heaters	SV9570A2518	Natural	Standard Opening	0° to 150° F (-18° to 66° C)	No	None		
	SV9570A2526	LP						
Intermittent HSI Pilot with Combustion Air Control and Limit Monitoring Forced Air Furnace	SV9541Q2561	Natural	2-Stage	-40° to 175° F (-40° to 79° C)	Yes	None		
	SV9641M4510		Standard Opening		Yes	Two		
Direct Ignition, General Application	SV9510M2511	Natural	Standard Opening	-40° to 175° F (-40° to 79° C)	Yes	None		
	SV9520M2536							
	SV9510K2539		Slow Opening					
	SV9520H8513		Fast-Slow Opening				0° to 175° F (-18° to 79° C)	
Intermittent HSI Pilot, General Application	SV9601M4571	Natural	Standard Opening	-40° to 175° F (-40° to 79° C)	Yes	Two		
	SV9501M2528					None		
	SV9501M8129		Fast-Fast					
	SV9502H2522		Slow Opening			0° to 175° F (-18° to 79° C)		
	SV9602P4816		Step Opening			-40° to 175° F (-40° to 79° C)	None	Two
	SV9602P4824							
	SV9602P4832							
	SV9602P4840							

SPECIFICATIONS	CROSS-REFERENCE	
	OEM Brands	Replaces
Includes		
Extension Harness		
No	A.O. Smith	SV9570A2054, SV9570A2070, SV9570A2096
	A.O. Smith	SV9570A2062, SV9570A2088, SV9570A2187
No	ICP, Heil, Tempstar, Arcoaire, Comfortmaker, KeepRite	SV9540Q2464, SV9541Q3098
	ICP, Heil, Tempstar, Arcoaire, Comfortmaker, KeepRite, Mestek, Slant/Fin	SV9541M2094, SV9540M2229, SV9540M2260, SV9640M4116, SV9640M4124, SV9540M2278, SV9540M2245, SV9640M3126, SV9640M4132
No	Modine	SV9510M2347, SV9510M2362, SV9410M2902, SV9510M2412, SV9510M2354, SV9410M2910, SV9510M2388, SV9510M2420
		SV9420M2331, SV9520M2403, SV9420M2323
No	Roberts Gordon	SV9510H2228, SV9510K2133, SV9510K2158, SV9510K2141, SV9510K2166
	Armstrong, Concord, AirEase	SV9520H8042, SV9520H8034, SV9520H8067, SV9520H8026
No		SV9601M4167, SV9601M3003, SV9601M4225
	ICP, Heil, Tempstar, Arcoaire, Comfortmaker, KeepRite	SV9501M2056, SV9501M2080, SV9501M2718, SV9501M2726, SV9501M2031, SV9501M2049, SV9501M2239, SV9501M2700, SV9501M2734, SV9501M2742, SV9501M2064
Yes		SV9501M8103
	Laars, Utica, Armstrong, Concord, AireEase	SV9501H3415, SV9501H2417, SV9501H2409, SV9502H1706, SV9502H2704, SV9501H3423, SV9501H2425
Yes	Burnham, ICP, Heil, Tempstar, Arcoaire, Comfortmaker, KeepRite	SV9501P2004, SV9601P4107, SV9501P2053, SV9502P2101, SV9602P4105
	Burnham	SV9501P2087, SV9601P4172, SV9502P2127, SV9602P4121
	Burnham	SV9501P2020, SV9501P2046, SV9601P4149, SV9601P4164, SV9502P2119, SV9502P2135, SV9602P4113, SV9602P4139
		SV9601P4115

For a complete cross-reference, visit [www.customer.honeywell.com](http://www.customer.honeywell.com)

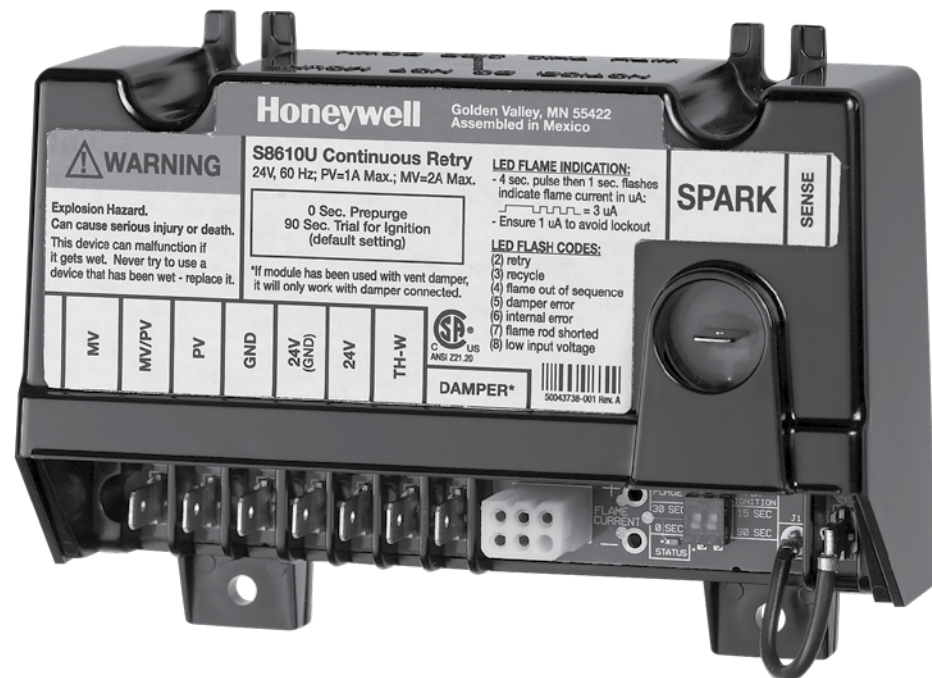


# Ignition Modules

Honeywell ignition controls have a long history of safe and reliable performance. Grow your business while reducing inventory with Universal ignition modules. A full lineup of Universal replacement electronic control is available for nearly all intermittent or hot surface ignition applications from gas-fired furnaces to boilers.

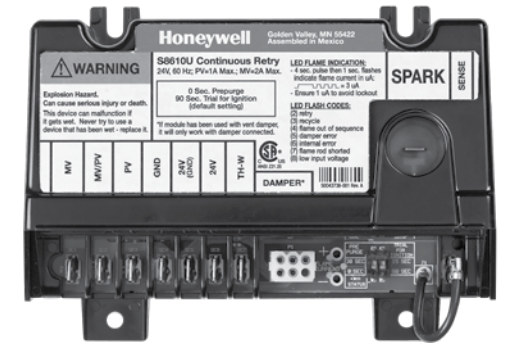
When selecting ignition modules for your next job, look for these Honeywell features:

- Universal application with field adjustable timings
- Flexibility for use in single-rod or dual-rod systems
- Quality, reliability and safety of field proven controls
- Simplified installation



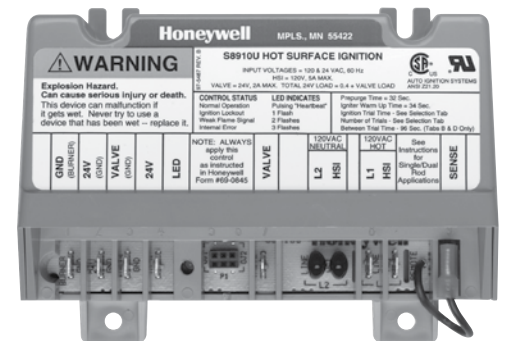
## S8610U Universal Intermittent Pilot Ignition Module

- Flame voltage auto-adjusts for improved operation
- Usable in both single-rod or dual-rod systems
- Field-selectable pre-purge and ignition trial timings
- Simple, diagnostic LED helps direct service effort
- Direct pilot flame current readout with standard micro-ammeter
- Plug in vent damper connection simplifies installation
- Replaces over 400 Honeywell and competitive models



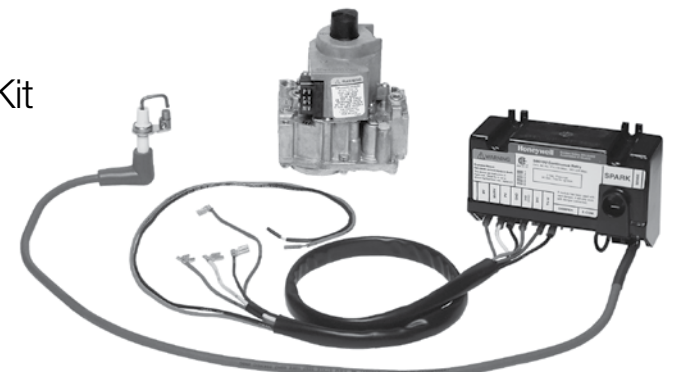
## S8910U Universal Hot Surface Ignition Module

- Easy field replacement for most hot surface ignition modules
- Single-rod or dual-rod systems
- LED diagnostics and field-adjustable ignition timings
- Natural or LP gas
- All retrofit accessories included
- Replaces over 650 Honeywell and competitive products



## Y8610U Universal IP Retrofit Ignition System Kit

- Use with 24 Vac gas-fired atmospheric furnaces, boiler and heating appliances
- Convert standing pilot appliance to electronic ignition
- Natural or LP gas



# Ignition Modules Selection Guide

Universal Service Part	APPLICATIONS			TIMINGS				
	Ignition System	Flame Sensor	Ignition Sequence (Note 1)	Ignition Trials To Lockout (Note 1)	Ignition Trial Time	Between Trial Time	Pre-Purge	Flame Failure Response Time
<b>S8910U1000</b>	Line Volt Hot Surface Ignition	1 or 2 Rods	P	1 or 3 Field Selectable	4 sec. or 7 sec. Field Selectable	96 sec., 3 Trial Mode Only	32 sec.	1.5 sec.
<b>S8610U3009</b>	Intermittent Pilot	1 or 2 Rods	C	C	15 sec. or 90 sec. Field Selectable	5 Minute Delay After Failed Trial for Ignition	0 sec. or 30 sec. Field Selectable	2.0 sec. max.
<b>Y8610U6006</b>	Conversion for Standing Pilot	Single Rod	C	C	15 sec. or 90 sec. Field Selectable	5 Minute Delay After Failed Trial for Ignition	0 sec.	2.0 sec. max.
<b>Y8610U4001</b>	Conversion for Standing Pilot	Single Rod	C	C	15 sec. or 90 sec. Field Selectable	5 Minute Delay After Failed Trial for Ignition	0 sec.	2.0 sec. max.

**Notes:**

1. Ignition Sequence

C	Continuous retry — After trial for ignition, pilot gas shuts off for five minutes, then another trial for pilot ignition takes place.
P	The number of trials for ignition and trial time is determined by the selection tab. If a selection tab is not installed, the module will operate at four seconds trial time and one ignition trial.

FEATURES AND FUNCTIONS				CROSS-REFERENCE			
Type of Gas	Ignition Source	Typical Ignition Hardware	Includes	Honeywell	White-Rodgers	Robertshaw	Johnson Controls
Nat or LP	Switched Line Voltage	Norton 201, Norton 271, Hot Surface Elements, Q354 Flame Rod		S89C1004, S89C1012, S89C1046, S89C1087, S89C1103, S89D1002, S89G1005, S89G1013, S89G1021, S89G1047, S89H1003, S89H1011, S89H1029, S89J1008, S89OC1007, S89OD1006, S89OG1003, S89OG1011, S89OG1029, S89OG1037, S89OH1002, S89OH1010, S89OH1028	50E47-1 thru 50E47-79, 50E47-101 thru 50E47-179, 50E47-201 thru 50E47-279, 50E47-301 thru 50E47-379, 50F47-1 thru 50F47-79, 50F47-101 thru 50F47-179, 50F47-201 thru 50F47-279, 50F47-301 thru 50F47-379	HS780-17NL-104A, HS780-17NL-108A, HS780-17NL-304A, HS780-17NL-308A, HS780-17NR-104A, HS780-17NR-306A, HS780-17NR-308A, HS780-34NL-108A, HS780-34NL-304A, HS780-34NL-306A, HS780-34NL-308A, HS780-34NL-312A, HS780-34NR-104A, HS780-34NR-306A, HS780-34NR-308A, HS780-34NR-312A, HS780-34PL-308A,	
Nat or LP	Internal	Q345, Q3451, Q3452	Integral Damper Connector	S86 Series, S90 Series, S8600 Series, S8610 Series, S8620 Series, S8660 Series, S8670 Series, S8680 Series	50D49-350, 50D49-360, 50D49-361, 50D50-843, 50D49-401	780-002, 780-003, 780-715, 780-735, 780-736, 780-737, 780-845, SP715, SP715A, SP735D, SP735L, USI715U, SP735, SP750 Series	CSA42, 43, 44, 45, 46, 48, 49, G60, G65, G67, G770 Series
Nat or LP	Internal	Adapter for Pilot Burner Included		Y8610U3003			
Nat or LP	Internal	Adapter for Pilot Burner Included					

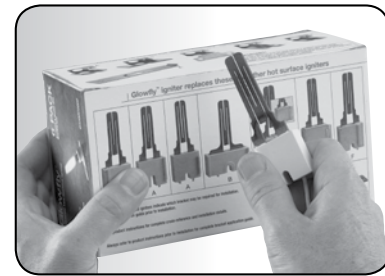
For a complete cross-reference, visit [www.customer.honeywell.com](http://www.customer.honeywell.com)

# Universal Hot Surface Igniter

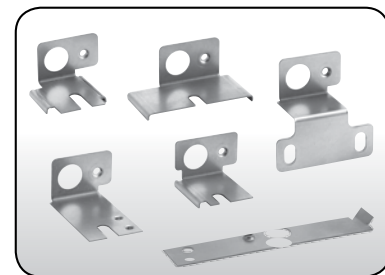
Replacing a hot surface igniter can be a tricky job. Furnace designs and specifications change. Appliance designs can be tight and difficult to maneuver in. Then there's the need to carry a variety of replacement parts to match the range of hot surface igniter configurations out there. Now, those challenges have one reliable solution: Glowfly® from Honeywell.

When selecting an igniter for your next job, look for these Honeywell features:

- Next-generation OEM silicon nitride quality for any installation
- Custom designed bracketing for universal installation
- The strongest warranty in the industry
- Avoid being caught unprepared with the unique truck-ready six-pack
- Graphic instructions provide for quick and accurate bracket selection and installation



**Match and mount simplicity.** Simply remove the old igniter and compare it with the diagrams on Glowfly's unique packaging guide to determine the correct mounting bracket for the job.



**Six brackets. 110+ possibilities.** Every Glowfly comes fully equipped with six custom mounting brackets that are optimized to replace over 110 igniter applications from nearly every furnace manufacturer without modification.

Q3200U2002  
Six Pack

Q3200U1004  
Single Pack



## Igniter Bracket Replacement Cross Reference<sup>a</sup>

MANUFACTURER	OEM #	Q3200U BRACKET <sup>b</sup>	MANUFACTURER	OEM #	Q3200U BRACKET <sup>b</sup>	MANUFACTURER	OEM #	Q3200U BRACKET <sup>b</sup>	
American Road Equip.	201W	A	Modine	5H76032A	C	Tempstar	1096048	D	
Arco Air	1096048	D	Mor-Flo	3200618	A	Trane	340039P01	A	
	1380680			B	B138196P01		B		
Armstrong Air	38322B001	A	Nordyne	105141000	A		B144676P01	A	
	Carrier/ Bryant/ Payne	LH33ZS001		B or E <sup>c</sup>			632-0770	Norton/St Gobain	B144676P02
LH33ZS001A		632-0880					B340039P01		A
LH33ZS002		201	IGN23		A				
LH33ZS002A		271	IGN26		B				
LH33ZS003	201D	IGN30	B						
LH33ZS003A	201K	IGN34	A						
LH33ZS004	201L	Viessman	9302-094	A					
Claire Bros.	C-238		Wayne Home Equip.	62821-001	A				
	C242			62821-002	A				
Coleman	1474-051			Weil McLain	511-330-139	B			
	1474-052				511-330-190				
Comfort Maker	1096048			D	White LB	120-07549	A		
Detroit Radiant	201D	A		767A-301		A			
DMO Ind.	20834	A	White-Rodgers	767A-303	F				
Dornback Furnace	271W	A		767A-306					
Ducane	20015201	B		767A-311	A				
Enero Tech	10399	A		767A-350					
Evcon	1474-051	A		767A-353	F				
	1474-052			767A-354	A				
Evcon Coleman	025-32625-000	B		767A-357	F				
Goodman	B1401009	D		767A-361	A				
	B1401018			767A-364					
	B1401018S			767A-366					
HB Smith	50018	A		767A-370	B				
Heil	1096048	D		767A-371	A				
Hupp Industries	09050	A		767A-372	A				
	1009604			767A-373	D				
Intercity	1096048	D	767A-376	B					
	75-92-104		767A-377	A					
Majestic	75-92-105	A	767A-382	B					
	201N		A	9050					
201W		025-27766-000		A					
Metzger	1380654	B	025-27774-000						
	1380672		025-29043-000						
1380680	025-29050-000								
Superior Fireplace	94851	A							

<sup>a</sup> Table data is correct to the best of Honeywell's knowledge as of this publication's date. However, some appliances may have igniter applications that are beyond the capabilities of this kit.

<sup>b</sup> For igniters that require bracket A, use the template to determine the tab to be removed.

<sup>c</sup> For Carrier sealed combustion furnaces, you must use bracket E and retain the existing orange gasket for use with bracket E.

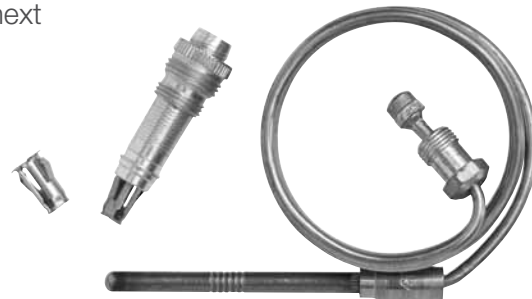
For a complete cross-reference, visit [www.customer.honeywell.com](http://www.customer.honeywell.com)

# Thermocouples/Thermopiles

Contractors depend on Honeywell for easy installation and reliable performance. Built for long service life, the Honeywell Q313A, Q340A and Q390A will work for nearly all pilot generated millivolt applications.

When selecting a thermocouple or thermopile for your next job, look for these Honeywell features:

- Variety of lead lengths
- Easy installation
- Many accessories included
- Durability



## Thermocouple and Thermopile Selection Guide

THERMOCOUPLES							
Lead Length (in.)	US Super Tradeline	Canada	Tradeline	Cross-Reference			
				White-Rodgers	Robertshaw	Husky	Johnson Controls
18	Q340A1066	Q340A1405	Q390A1095	H06E-518, H06E-18		K16BT-18	K19AT-18
24	Q340A1074	Q340A1413	Q390A1046	H06E-524, H06E-24	1970-24, 1980-24	K16BT-24	K19AT-24
30	Q340A1082	Q340A1421	Q390A1053	H06E-530, H06E-30	1970-30	K16BT-30	K19AT-30
36	Q340A1090	Q340A1439	Q390A1061	H06E-536, H06E-36	1970-36, 1980-36	K16BT-36	K19AT-36
48	Q340A1108	Q340A1447	Q390A1103	H06E-548, H06E-48		K16BT-48	K19AT-48

THERMOPILES						
Model	Item		Lead Length (in.)	Connection	Tradeline/Super Tradeline	Notes
Q313	Q313A1022		35	Nut & Spade Terminal	Tradeline	
	Q313A1139		35	Clip & Spade Terminal	Super Tradeline	Push-In Clip
	Q313A1170		35	Clip & Spade Terminal	Super Tradeline	PG9 Adapter (393948)
	Q313A1188		35	Nut & Spade Terminal	Super Tradeline	Push-In Clip, 1/2" Attaching Nut
	Q313A1055		47	Nut & Spade Terminal	Tradeline	1/2" Attaching Nut
	Q313A1105		75	Nut & Spade Terminal	Tradeline	1/2" Attaching Nut

For a complete cross-reference, visit [www.customer.honeywell.com](http://www.customer.honeywell.com)

## Q313A Replacement Thermopile

- Variety of lead lengths
- Push-in clip, split nut and adapter assembly included
- Male nut connector for Pilotstat included
- Generates 750 mV in a millivolt heating system



## Q340A Universal Thermocouple

- Variety of lead lengths
- Push-in clip, split nut and adapter assembly included
- Male nut connector for Pilotstat included
- Generates 30 mV in standing pilot systems
- The Q340A is a premium thermocouple with the long life and durability that your customers demand; built with a maximum amount of copel, the Q340A will provide long-lasting service that reduces callbacks and keeps your customers happy



## Q390A Universal Thermocouple

- Variety of lead lengths
- Push-in clip, split nut and adapter assembly included
- Male nut connector for Pilotstat included
- Generates 30 mV in standing pilot systems
- For situations where a utility grade thermocouple is the best solution, the Q390A is the right choice

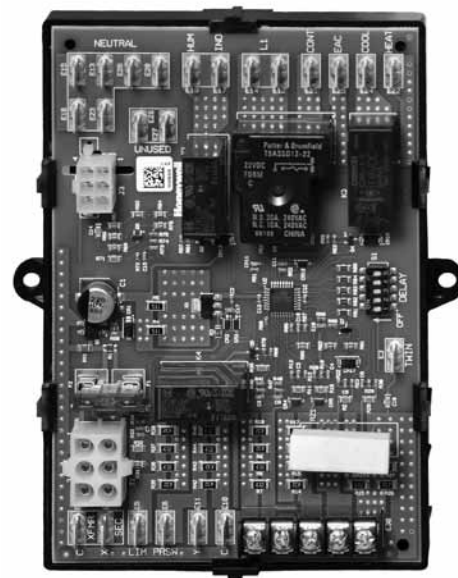


# Universal Electronic Fan Timer

Replaces all others. The new universal platform that will not only integrate control of all combustion blower and circulating fan operations in a gas warm air appliance but also replace most ST9120, ST9141 and ST9160 fan timer boards. Save room on your truck or on your shelves with a supply of ST9120U1011 timers and know you're covered.

When selecting fan timers for your next job, look for these Honeywell features:

- Universal application
- Easy installation
- Quality construction for long service life



## ST9120U1011

- Replaces 44 existing Honeywell controls to reduce inventory
- Integrates control of all combustion blower and circulating fan operations in a gas warm-air appliance
- Replaceable fuse
- DIP switch selectable heat and cool delay on and off times
- Diagnostic LED
- EAC and HUM convenience terminal connections and continuous low speed indoor air circulation are provided

ST9120U REPLACES OVER 44 EXISTING MODELS			
ST9101A1006	ST9120C3018	ST9120G4038	ST9160B1001
ST9101A1014	ST9120C4008	ST9120U1003	ST9160B1019
ST9101A1022	ST9120C4016	ST9141A1002	ST9160B1027
ST9120A2004	ST9120C4040	ST9141A1028	ST9160B1035
ST9120B1005	ST9120C4057	ST9141B1001	ST9160B1043
ST9120C1012	ST9120C5005	ST9150A1003	ST9160B1050
ST9120C1020	ST9120C5013	ST9150B2000	ST9160B1068
ST9120C2002	ST9120D3009	ST9150B2018	ST9160B1076
ST9120C2010	ST9120G2024	ST9150B2026	ST9160B1084
ST9120C2028	ST9120G2032	ST9150B2034	ST9160C1000
ST9120C3000	ST9120G4004	ST9160A1002	ST9160C1018

# Universal Electronic Fan Timer OEM Replacement Guide

RECOMMENDED DIP SWITCH SETTING						
Replaced Control Model Number	Original OEM Appliance	1	2	3	4	5
ST9101A1006	Rheem	off	off	off	off	off
ST9101A1014	Rheem	off	off	off	off	off
ST9101A1022	Trade	off	off	off	off	off
ST9120A1006	Armstrong	off	off	off	off	off
ST9120A2004	Armstrong	on	off	on	off	off
ST9120B1005	Ducane	off	on	off	off	off
ST9120C1012	Snyder General	on	off	off	off	off
ST9120C1020	Nordyne	on	off	off	off	off
ST9120C2002	York	off	off	off	off	off
ST9120C2010	Ducane	off	off	off	off	off
ST9120C2028	Armstrong	off	off	off	off	on
ST9120C3000	ICP	off	off	on	on	off
ST9120C3018	Bard	on	off	off	off	on
ST9120C4008	ICP	off	off	on	on	off
ST9120C4016	ICP	off	off	on	on	off
ST9120C4040	ICP	off	off	on	on	off
ST9120C4057	ICP	off	off	on	on	off
ST9120C5005	ICP	off	off	on	off	off
ST9120C5013	ICP	off	off	on	off	off
ST9120D3009	Goodman	off	off	on	off	on
ST9120G2008	ICP	on	off	off	on	off
ST9120G2016	ICP	off	off	off	on	off
ST9120G2024	Skymark	off	on	off	on	off
ST9120G2032	Skymark	off	on	off	off	on
ST9120G4004	ICP	off	off	on	on	off
ST9120G4012	ICP	off	off	on	on	off
ST9120G4038	Trade	off	off	on	on	off
ST9120U1003	Trade	off	off	on	off	off
ST9141A1002	Consolidated Industries	off	off	on	off	on
ST9160B1035		off	off	off	off	off
ST9160B1068	Armstrong	on	off	off	off	on
ST9160B1076	Ducane	off	off	off	off	off
ST9160B1084	ICP	off	off	on	off	on
ST9120U Factory Default Setting		off	off	off	off	off

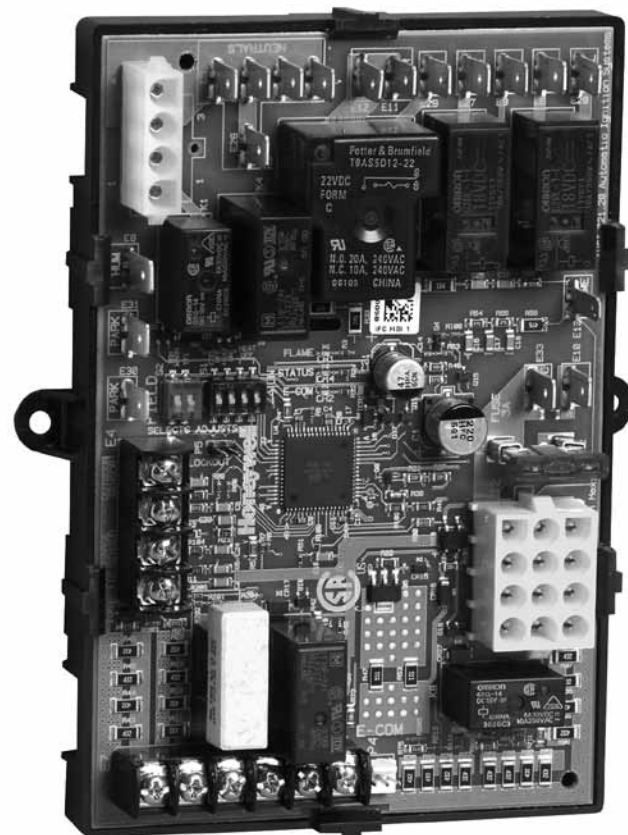
For a complete cross-reference, visit [www.customer.honeywell.com](http://www.customer.honeywell.com)

# Universal Integrated Furnace Control

The Honeywell Hot Surface Ignition Universal Integrated Furnace Control offers universal compatibility and remote monitoring and diagnostics. Able to replace a large number of furnace controls in single-stage heating and cooling appliances. Honeywell UIFCs are the only controls you need for residential natural or liquid propane fueled furnaces.

When selecting furnace controls for your next job, look for these Honeywell features:

- Replaces over 140 furnace controls
- Complete set of wiring harnesses for universal compatibility, simplified installation and field-adjustable timings
- LED indicators provide system status, performance and diagnostic information
- EnviraCOM™ communications enabled



## HSI Universal Integrated Furnace Control

- Complete set of wiring harnesses for universal compatibility and simplified installation allowing for direct replacement of competitive boards
- LED indicators provide system status, performance and diagnostic information
- EnviraCOM™-enabled for easy setup of local or remote monitoring and diagnostic systems
- Ready for remote services, whether you're replacing old controls or installing new equipment like the VisionPRO™ IAQ, Telephone Access Module or EnviraZONE™
- Engineered for reliability and long-term performance



### S9200U1000 REPLACES THESE INTEGRATED FURNACE CONTROLS

Amana	10207701, 10207702, 10207703, 10207710
Goodman	1809913, B1809913, B18099-13
ICM	ICM280
ICP	1010806, 1380-686, 1380-699
Lennox	1214201
Nordyne	624557, 6245570, 624557-0, 624564, 6245640, 624591, 624591A, 624591-A, 624591-B, 624591-C, 624591-D, 624628, 624628-0, 6246310, 624631-0, 624631A, 624631-A, 624631-B, 710128A, 902378, 902696, 903106, CAR903106
Rheem/Robertshaw	62-24268-01, 62-24268-02, 62-24268-03, 695-200
Texas Instruments	6DT-1, 6DT-2, 61F3, 41F-5
Trane	D330927P01, D330930P01, D330934P01, D340035P01, D340354P01, D340774P01, D341235P01, 50A50-571, 50A55-571, 50A50-473, 50A50-474, 50A50-405, 50A50-406, 50A50-471
United Technologies	1012-925A, 1012-925B, 1012-925C, 1012-955A, 1012955A, 1012-83-9651B, 1012933D, 1012-933D, 1012-83-9336AHSC1, 1012-83-9337A
White-Rodgers	50A55-843, 50A50-110, 50A50-111, 50A50-112, 50A50-113, 50A50-142, 50A50-143, 50A50-205, 50A50-206, 50A50-207, 50A50-209, 50A50-230, 50A50-241, 50A50-285, 50A50-286, 50A50-288, 50A50-295, 50A50-296, 50A50-405, 50A50-406, 50A50-408, 50A50-438, 50A50-471, 50A50-473, 50A50-474, 50A50-571, 50A55-120, 50A55-143, 50A55-241, 50A55-285, 50A55-286, 50A55-288, 50A55-438, 50A55-474, 50A55-571, 50T35730, 50T35-730, 50T35743, 50T35-743, D330927P01, D330930P01, D330934P01, D340035P01, D340354P01, D340774P01, D341235P01
York	03100662000, 031-00662-000, 031-00662-700, 031-01140-000, 031-01140-001, 031011140002, 031-01140-002, 031-01140-701, 031-01140-702, 031-01234-000, 031-01235-000, 031-01234-700, 031-01235-700, 031-01250-000, 031-01266-000, 31-01267-00, 031-01267-000, 031-01267-001, 031-01267-001A, 031-01284-000, 031-01933-000, 031-01972-000, 031-01973-000, 031-02166-000, 031-09166-000, 031-09167-000, 331-01933-000, 331-01972-200, 331-09167-000, 43101972100, 431-01972-100, P03101267001, P031-01267-001, PTH031011400-00, CAR33101972200, CAR03101973000, CAR50A55843, G951ADB1401, G951ADB1401C, G951ADB-1401C, G951ADB1402, G951ADB-1402, G951AEB-1403, 031-00662, 031-01266-000

For a complete cross-reference, visit [www.customer.honeywell.com](http://www.customer.honeywell.com)

# Universal Integrated Furnace Control Selection Guide

	SKU	HARNESS	FIELD SETTINGS RECOMMENDATION				SAFETY TIME SETTINGS	
			SW1	SW2	SW3	SW4	SW1	SW2
<b>Goodman<sup>1</sup></b>	1809913, B1809913, B18099-13	Main Harness E & Inducer/HSI Harness F	On	Off	60/90/120/180	60/90/120/180	Off	On
<b>ICM</b>	ICM280	Main Harness E & Inducer/HSI Harness F	Check Control Field Settings				Check Control Safety Timings	
<b>ICP</b>	1010806	Inducer/HSI Harness A	On	Off	60/90/120/180		Off	Off
	1380-686						Off	On
	1380-699						Off	On
<b>Lennox</b>	1214201	Inducer/HSI Harness A	On	Off	On	Off	Off	Off
<b>Nordyne</b>	624557, 6245570, 624557-0	Main Harness D & Inducer/HSI Harness B	On	Off	60/90/120/180	60/90/120/180	On	Off
	624564, 6245640							
	624591							
	624591A, 624591-A							
	624591-B							
	624591-C							
	624591-D							
	624628, 624628-0							
	6246310, 624631-0							
	624631A, 624631-A							
	624631-B							
	710128A							
	902378							
	902696							
903106, CAR903106								
<b>Rheem/Robertshaw</b>	62-24268-01	Main Harness D & Inducer/HSI Harness C	On	Off	60/90/120/180	60/90/120/180	On	On
	62-24268-02							
	62-24268-03							
	695-200							
<b>Trane</b>	D330927P01	Inducer/HSI Harness A	On	Off	60/90/120/180	60/90/120/180	Off	Off
	D330930P01		Off	Off			Off	On
	D330934P01							
	D340035P01							
	D340354P01		On	Off	60/90/120/180	60/90/120/180	Off	Off
	D340774P01							
	D341235P01							
	50A50-571							
	50A55-571 <sup>2</sup>							
	50A50-473							
	50A50-474							
	50A50-405		Off	Off	60/90/120/180	60/90/120/180	Off	On
	50A50-406							
	50A50-471							
<b>TI</b>	41F-5	Main Harness E & Inducer/HSI Harness F	On	Off	60/90/120/180	60/90/120/180	Off	On
	6DT-1	Inducer/HSI Harness A	On	Off	60/90/120/180	60/90/120/180	Off	On
	6DT-2							
	61F3							
<b>UTEC</b>	1012-925A	Main Harness D & Inducer/HSI Harness C	On	Off	60/90/120/180	60/90/120/180	On	On
	1012-925B							
	1012-925C							
	1012-955A, 1012955A	Main Harness D & Inducer/HSI Harness B	On	Off	60/90/120/180	60/90/120/180	On	Off
	1012-83-9651B	Inducer/HSI Harness A	On	Off	60/90/120/180	60/90/120/180	Off	On
	1012933D, 1012-933D	Main Harness E & Inducer/HSI Harness F	On	Off	60/90/120/180	60/90/120/180	Off	On
	1012-83-9336AHSC1							
1012-83-9337A								

<sup>1</sup>Wiring harness G should be used if the control being replaced has a 2-pin inducer/igniter connector instead of a 4-pin inducer/igniter connector.

Use with only 120 VAC Appliances

	SKU	HARNESS	FIELD SETTINGS RECOMMENDATION				SAFETY TIME SETTINGS								
			SW1	SW2	SW3	SW4	SW1	SW2							
<b>Amana<sup>1</sup></b>	10207701	Inducer/HSI Harness A	On	Off	On	Off	Off	On							
	10207702														
	10207703														
	10207710														
<b>White-Rodgers<sup>1</sup></b>	50A50-110	Inducer/HSI Harness A	On	Off	60/90/120/180	60/90/120/180	Off	On							
	50A50-111														
	50A50-112														
	50A50-113														
	50A50-142								Check Settings	Off	Off	Off			
	50A50-143														
	50A50-205								On	Off	On	Off	Off	On	
	50A50-206														
	50A50-207														
	50A50-209	Inducer/HSI Harness A	On	Off	On	On	Off	On							
	50A50-230														
	50A55-241	Inducer/HSI Harness A	On	Off	60/90/120/180	60/90/120/180	Off	On							
	50A50-241														
	50A50-285														
	50A50-286														
	50A50-288														
	50A50-295														
	50A50-296														
	50A50-438	Check Settings	On	60/90/120/180	60/90/120/180	Off	On								
	50T35730, 50T35-730	Main Harness E & Inducer/HSI Harness F	On	Off	60/90/120/180	60/90/120/180	Off	On							
50T35743, 50T35-743															
50A55-120	Inducer/HSI Harness A	Off	Off	On	Off	Off	Off								
50A55-143	Inducer/HSI Harness G	On	30/60	60/90/120/180	60/90/120/180	Off	Off								
50A55-285															
50A55-286	Inducer/HSI Harness A	On	Off	60/90/120/180	60/90/120/180	Off	On								
50A55-288															
50A55-438								Check Settings	Off	On	Off	Off			
50A55-474															
50A55-843								Check Settings	Check Settings	60/90/120/180	60/90/120/180	Off	Off		
<b>York</b>								03100662000, 031-00662-000	Inducer/HSI Harness A	On	Off	60/90/120/180	60/90/120/180	Off	On
								031-00662-700							
	031-01140-000														
	031-01140-001														
	031011140002, 031-01140-002														
	031-01140-701														
	031-01140-702														
	031.01234.000														
	031-01234-700														
	031-01235-000														
	031-01235-700														
	031-01250-000														
	031-01266-000														
	0310126700														
	031-01267-000														
	031-01267-001														
	031-01267-001A														
	031-01284-000														
	3101933000, 031-01933-000														
	031-01972-000														
	031-01973-000														
	031-02166-000														
	031-09166-000														
	031-09167-000														
	33101933000, 331-01933-000														
	331-09167-000														
	331-01972-200														
	43101972100, 431-01972-100														
	G951ADB1401														
	G951ADB1401C, G951ADB-1401C														
	G951ADB1402, G951ADB-1402														
	G951AEB-1403														
	P03101267001, P031-01267-001														
	PTH031011400-00														
CAR33101972200															
CAR03101973000															
CAR50A55843															
031-00662															

For a complete cross-reference, visit [www.customer.honeywell.com](http://www.customer.honeywell.com)

# Fan and Limit Controls

Honeywell fan and limits combines high temperature limit with circulating blower control. As an industry standard for many years, these controls have a large and varied installed base. You'll find Honeywell fan and limits on a wide range of furnace equipment. Our universal family increases service efficiency and reduces truck and warehouse inventory.

Key features for the family of universal fan and limits:

- Family members cover the full range of insertion — 5", 8", 11-1/2"
- Adjustment tool and cross-reference allow for field adjustment to factory settings
- Universal kit accessories reduce inventory

## L4064 High Limit and Fan Controller

- Used in all types of forced-air heating systems
- Three wiring terminal options available for easy installation
- Available in a variety of fan and high-limit setting ranges
- Controls adapt to many competitive mounting holes in replacement applications
- Push-in receptacles for stripped wire
- L4064 models for timed fan on
- Special high temperature limit models available
- Suitable for line voltage, low voltage or millivoltage control applications



## L6064 High-Limit and Two-Speed Fan Controller

- Provides two-speed fan control
- Continuous low-speed and high-speed on-call for heat
- Same overall size and mounting as L4064
- Same specifications as L4064



## Fan and Limits Selection Guide

MODEL	OS#	REGION	ELEMENT INSERTION LENGTH (IN.)	REPLACES	HIGH LIMIT STOP (°F)	FAN-ON STOP (°F)	FAN-OFF STOP (°F)	MANUAL FAN BUTTON	MANUAL RESET	SWITCHING ACTION
L4064	L4064B2228	US/Canada	5	L4064B1600, L4064B3440, L4064B3010, L4064B1683, L4064B2228, L4064B2640, L4064B2889, L4064B2947, L4064B3374, L4064B3432, L4064B2897, L4064B3598, L4064B3515, L4064E2502, L4064E2585, L4064E2528, L4064F1098, L4064A2501, L4064A1339, L4064A1503	160 to 200	110 to 125	85 to 100	Yes	No	Fan: SPST — N.O. (make on rise), Limit: SPST — N.C. (break on rise)
	L4064W1080	US/Canada	5	L4064W1072, L4064W1163, L4064W1197, L4064W1056, L4064W1064, L4064W1296, L4064Y1565	200	120	90	Yes	No	Fan: SPST — N.O. (make on rise), Limit: SPST — N.C. (break on rise)
	L4064B2236	US/Canada	8	L4064B3457, L4064B1618, L4064B1691, L4064B2608, L4064B2905, L4064B2962, L4064B2772, L4064B3572, L4064B3051, L4064B3085, L4064B3499, L4064B3481, L4064B3390, L4064E2452, L4064E2544, L4064A2279, L4064A2998, L4064A2030, L4064A1735, L4064A1347, L4064A1511, L4064A2774	170 to 250	120 to 140	90 to 104	Yes	No	Fan: SPST — N.O. (make on rise), Limit: SPST — N.C. (break on rise)
	L4064R1142	Canada	8	L4064R1019, L4064R1118, L4064R1126	180 to 250	125	100	Yes	Yes	Fan: SPST — N.O. (make on rise), Limit: SPST — N.C. (break on rise)
	L4064W1098	US/Canada	8	L4064W1007, L4064W1171, L4064W1130, L4064W1221, L4064W1205, L4064W1288, L4064T1707, L4064T1715, L4064T1780, L4064T2093, L4064T2440, L4064W1015, L4064Y1573	150 to 220	100 to 185	90 to 120	Yes	No	Fan: SPST — N.O. (make on rise), Limit: SPST — N.C. (break on rise)
	L4064B2210	US/Canada	11.5	L4064A1321, L4064A1453, L4064A2758, L4064A3046, L4064B3580, L4064B3465, L4064B1592, L4064B1725, L4064B1931, L4064B2210, L4064B2723, L4064B2863, L4064B2954, L4064B3036, L4064B3044, L4064B3077, L4064B2756, L4064B3069, L4064E2551	170 to 250	122 to 130	90 to 104	Yes	No	Fan: SPST — N.O. (make on rise), Limit: SPST — N.C. (break on rise)
	L4064R1134	Canada	11.5	L4064R1100, L4064R1068, L4064R1035, L4064R1027	170 to 250	125	100	Yes	Yes	Fan: SPST — N.O. (make on rise), Limit: SPST — N.C. (break on rise)
	L4064W1106	US/Canada	11.5	L4064T1046, L4064T2457, L4064W1213, L4064W1254, L4064Y1540	200 to 210	125 to 130	100	Yes	No	Fan: SPST — N.O. (make on rise), Limit: SPST — N.C. (break on rise)
	L6064A1052	Canada	5	L6064A1094, L6064E1020	180 to 200	105 to 125	90 to 100	No	No	Fan: SPDT, Limit: SPST — N.C. (break on rise)
	L6064A1045	Canada	8	L6064A1086	200	125 to 130	100	No	No	Fan: SPDT, Limit: SPST — N.C. (break on rise)
L6064A1037	Canada	11.5	L6064A1003, L6064A1078, L6064A1151	200	125 to 165	85 to 100	No	No	Fan: SPDT, Limit: SPST — N.C. (break on rise)	

\* Some models limit, Fan On and Fan Off need to be adjusted.

For a complete cross-reference, visit [www.customer.honeywell.com](http://www.customer.honeywell.com)



# Oil Primaries

Honeywell has set the standard for oil-fired furnaces, boilers and water heaters when it comes to oil primary controls. In addition to delivering dependability and high quality products, Honeywell has gone one step further to create an easy-to-use oil primary control designed to simplify installation and enhance maintenance. Our latest innovation will redefine that standard as the next generation of controls proves, it takes a legend to make one.

When selecting an oil primary for your next job, look for these Honeywell features:

- Universal application with field adjustable timings
- Integrated display allows for setup without using an external tool
- Advanced diagnostics that direct the technician to the likely cause of ignition failure
- Legendary performance and reliability



## R7284U1004 Universal Digital Electronic Oil Primary

- A single part number for nearly all applications helps reduce inventory cost
- 16 character two line tri-lingual display provides simple programming and diagnostics
- No additional tool to purchase to take advantage of all control features
- Monitors igniter and cad cell and alerts technician what component caused ignition failure
- Error history and baseline readings provide system performance trends



**5-YEAR  
WARRANTY**

## R8184 Protectorelay® Oil Burner Control

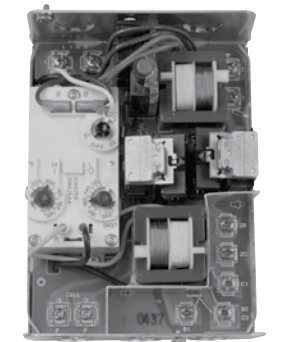
- Industry-standard intermittent ignition control
- Solid-state, flame-sensing circuit
- 45-second timing, safety switch
- Mounts on standard 4" x 4" junction box
- External button to manually reset safety switch after lockout



**2-YEAR  
WARRANTY**

## R8182 Combination Protectorelay® and Hydronic Heating Controllers

- Immersion-type Aquastat® controller and oil burner primary control
- Provides high limit and low limit/circulator control
- Use in intermittent ignition applications
- Circulator zone control with ZC and ZR terminals on R8182D, E, H, J



**2-YEAR  
WARRANTY**

## W8735S3000 EnviraCOM™ Alarm Module

- Works with any alarm generating EnviraCOM enabled control
- Local LED alarm present and communication active indication
- Simple low-voltage, 5-wire installation



# Oil Primaries Selection Guide

OIL PRIMARIES						
		Specifications				
Ignition Type	Universal Service Part	Lockout Time (sec.)	Valve On Delay (sec.)	Blower Off Delay (min.)	Alarm Contacts	Manual Trip Lever w/ LED Indicator
Interrupted	R7284U1004	15	0/15	0/2/4/6	Yes*	Yes
			15			
			15	0.25		
		30	0/15	0/2/4/6		No
			45	0/15	0/2/4/6	Yes*
		Intermittent	R7284U1004	15		
30						
45						Yes
					Yes*	
R8184M1051	45					

(1) Includes 40 VA transformers and heat/cool thermostat connections for warm-air furnace applications.

\*Alarm accessory module required. EnviraCOM™ Alarm Module W8735S3000

R8182 COMBINATION AQUASTAT AND OIL PRIMARY					
Direct Service Part	Features and Functions			Includes	Upgraded Cross-Reference
	Mounting	Differential Temperature (F)			Honeywell
		High Limit	Low Limit/Circulator		
R8182D1079	Vertical	10 fixed	10 to 25	Heat-Conductive Compound	R8182E1118
R8182D1111	Horizontal	10 fixed	10 to 25	Heat-Conductive Compound	R8182D1129
R8182H1070	J Box	10 fixed	10 to 25	Heat-Conductive Compound	
R8182J1042	J Box	15 fixed		Heat-Conductive Compound	R8182J1059

STACK SWITCHES		
Model Number	Ignition Type	Replaces
RA116A1055	Intermittent	RA116A1063
RA117A1047	Interrupted	

Cross-Reference			
Honeywell	Beckett	Carlin	White-Rodgers
R7184U1004, R7184P1031, R7184P1049, R7184P1056, R7184P1064, R7184P1072	7505P125M	50200-02S, 602000-02S, 6020002S015120, 6020002S030015, 6020002S030030, 6020002S030120, 6020002S030300, 6020002S030010	
R7184A1026, R7184A1075, R7184A1000	7505A0000	40200-02S	669-640, 669-670
R7184B1024, R7184B1032, R7184B1016	7505B1500		
R7184P1080, R7184P1098	7505P1515		
R7184U1012			
R7184A1018, R7184A1034		42230-02S	669-440, 669-445, 669-470, 669-540
R7184U1020			
R7184A1042			
R8184G1294, R8184G1302, R8184G4066, R8184G4074, R8184G4033, R8184G4090, R8184G1427, R8184G4058	7505A0000		668-601, 668-670
R8184G1393, R8184G1302, R8184G4074, R8184G4033			668-501
R8184G1286, R8184G1427, R8184G1458, R8184G4009, R8184G4025, R8184G4082, R8184G4108		48245-S	668-401, 668-415, 668-430, 668-515
			668-430
R8184M1002			668-441, 668-451, 668-454

CAD CELL SELECTOR GUIDE									
Product Number	CAD Cells (1)	Lead Length (in.)	Wire Termination	Mounting Bracket	Includes	Tradeline Value	Replaces	White-Rodgers	Westwood
C554A1463	130367	60	2 Flag 1/4" QC	Type R	A, B, E, J and P Mounting Brackets and Fuel Line Adaptor	Super Tradeline	C554A1307, C554A1315, C554A1398, C554A1133, C554A1174, C554A1372, C554C1570, C554A1216, C554A1927, C554A1794	956-154	TMK-60
C554A1794	130367	60	Stripped	Type R	E Mounting Bracket and Fuel Line Adaptor	Tradeline	C554A1307, C554A1927	956-11 956-154	TMK-60

**Notes:**

\*120320 replacement CAD cell 7.5 MA minimum sensitivity at 2' candles.

\*130367 high-sensitivity CAD cell 12 MA minimum sensitivity at 2' candles.

For a complete cross-reference, visit [www.customer.honeywell.com](http://www.customer.honeywell.com)

# Outdoor Reset

The AquaReset improves comfort and efficiency inside because it knows the weather outside. Our new product is designed to help homeowners save on energy costs by operating their boiler at more efficient settings based on the actual outdoor temperature while providing the necessary heat to maintain a comfortable indoor temperature. Integrating easily into any Honeywell outdoor reset ready electronic Aquastat, this product provides easy installation and up to 15 percent energy savings for the homeowner.



## L7224R1000 Honeywell AquaReset Outdoor Reset System

- Designed to improve boiler efficiency by automatically resetting boiler water temperature based on outdoor temperature
- Upsell opportunity for contractors during a oil-fired service call
- Boost mode ensures homeowner comfort needs quickly met when control in reset
- Meets 2012 DOE mandate to include advanced control on boilers
- Compatible with EnviraCOM Alarm Module (W8735S3000)



## W8735S1000 Honeywell AquaReset Outdoor Reset Kit

- Designed to improve boiler efficiency by automatically resetting boiler water temperature based on outdoor temperature
- Upsell opportunity for contractors during a new boiler installation when an Outdoor Reset Ready Aquastat is present
- Simple installation with three wire connection to the Aquastat
- Compatible with any L7224 or L7248 Outdoor Reset Ready Aquastat



## W8735S1008 Honeywell AquaReset Domestic Hot Water Kit

Required for domestic hot water override with some Honeywell's AquaReset installations\*

- Compatible with Honeywell AquaReset system and kit
- Ensures domestic hot water needs are met when combining AquaReset with an indirect DHW tank.
- Easy three-wire installation to AquaReset module

\* Kit required to enable domestic hot water override functionality with Indirect DHW tank when the Zr terminal on the Aquastat® is not used or available for DHW demand. See instructions or visit [customer.honeywell.com](http://customer.honeywell.com) for complete details.

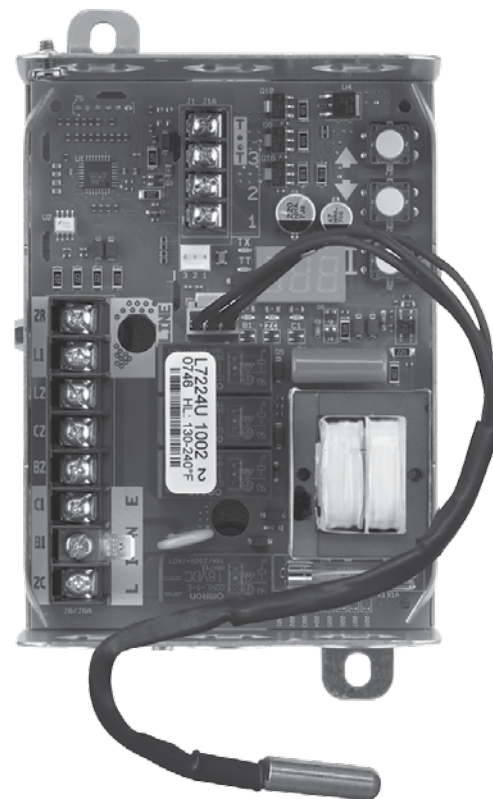


\*Honeywell Inc. 1979 Study; Control Systems Providing Energy Savings with single and multi-zone Hydronic Heating. 15% is the average energy savings and can only be achieved when installing an outdoor reset model, domestic hot water priority is off and the unit is installed as directed.

The boiler industry standard, Honeywell Aquastats have a proven track record, wide OEM new equipment usage and a large installed base. Our electronic Aquastat family builds on this reputation while adding performance-enhancing features. Honeywell service parts have you covered, offering universal compatibility and improved service call efficiency — while keeping both distributor and contractor satisfaction in mind.

When selecting an Aquastat for your next job, look for these Honeywell features:

- Broad range and flexibility covers a variety of applications and needs
- Universal versions allow multiple mounting and configuration capability
- Universal versions reduce inventory and assure truck availability
- Electronic versions include communications as a standard feature, allowing add-on efficiency, troubleshooting and monitoring capability
- EnviraCOM™ communications enabled



## L7224

### Universal Oil Electronic Aquastat

- Diagnostic updates through easy-to-read LED displays
- +/- 2° F accuracy and faster response times
- Adjustable high- and low-limit differential
- Outdoor reset functionality available with W8735S1000
- Provides multizone control
- Thermowell horizontal or vertical and flush mounting
- EnviraCOM™ communications enabled
- Add alarm contacts with W8735S3000



## L8124/L8148

### Triple Aquastat Relay

- Oil and gas versions
- High-limit or high-and-low-limit versions
- Mounts directly on boiler horizontally or vertically
- Provides multizone control
- Immersion-type controllers that combine high limit protection with low limit and circulator control in forced hydronic heating systems
- The L8148 includes a transformer to provide power for the low-voltage control circuit
- Gas versions include a transformer to provide power for the low voltage circuit



## L6006/L4006

### Aquastat Controller

- Totally enclosed Micro Switch snap-acting switches operate on temperature rise to setpoint
- Visible control point scale and external adjustment screw permit easy setting
- Horizontal or vertical insertion of sensing element
- Direct or well immersion of the sensing element
- SPST and SPDT switching action



## L6008/L4008

### Aquastat Controller

- Visible control point scale and external adjustment screw permit easy setting
- Horizontal or vertical mounting of the remote element into boiler, tank or other container
- Fast-responding remote temperature sensor
- SPDT or SPST switching action



MULTI-FUNCTION

SINGLE-FUNCTION

# Single-Function Aquastat® Selection Guide

Product Number <sup>1</sup>	Switch Configuration	SENSOR AND THERMOWELL		FEATURES AND FUNCTIONS				
		Thermowell Included	Thermowell Spud Size — 14 NPT (in.)	Capillary Length (in.) <sup>2</sup>	Manual Reset	Operating Temperature Range (°F)	Factory Stop (°F)	
L4006A1009	SPST - N.C. (break on rise)	Yes	1/2	1-1/2		100 to 240		
L4006A1017		Yes	1/2	1-1/2		100 to 240		
L4006A1132		Yes	3/4	3		100 to 240	160	
L4006A1678					3		100 to 240	
L4006A1959					3		40 to 180	
L4006A1967		Yes	1/2	1-1/2			100 to 240 <sup>3</sup>	
L4006A2007					3		100 to 240	
L4006A2148					3		100 to 200	
L4006E1042						Yes	130 to 270 <sup>3</sup>	240
L4006E1067					3	Yes	130 to 270	
L4006E1091					3	Yes	130 to 270	
L4006E1125					3	Yes	100 to 200	
L4006H1004					1-1/2		100 to 240 <sup>3</sup>	240
L4006G1022					3		100 to 200	
L4008A1015					66		100 to 240 <sup>3</sup>	
L4008A1130					120		130 to 270	
L4008A1189					66		130 to 270	
L4008E1156					66	Yes	130 to 270	250
L4008E1305					66	Yes	100 to 240	240
L4008E1313					66	Yes	100 to 200 <sup>3</sup>	
L4008E1347				66	Yes	40 to 180 <sup>3</sup>		
L4006B1007	SPST - N.O. (make on rise)	Yes	1/2	1-1/2		100 to 240		
L4006B1155					3		100 to 240	
L6006A1004	SPDT	Yes	1/2			100 to 240		
L6006A1012		Yes	1/2	1-1/2		100 to 240		
L6006A1145					3		100 to 240	240
L6006A1244					3		100 to 240	
L6006C1018							65 to 200	
L6008A1093					66		-30 to 70 <sup>3</sup>	
L6008A1192					66		100 to 240	240
L6008A1242					66		100 to 200 <sup>3</sup>	

All mounting is universal horizontal or vertical mounting unless noted. All Tradeline Aquastats® include heat-conductive compound.

- <sup>1</sup> Product Numbering  
 400X=SPST, 600X=SPDT  
 X006=Thermowell Sense, X008=Remote Sense  
 A Make on Rise  
 B Break on Rise  
 D Break on Rise w/o Cover  
 E Make on Rise w/Manual Reset  
 G Two SPDT  
 H Make on Rise w/Strap-On Mount

- <sup>2</sup> Capillary Length  
 If less than 3" then insulation depth of thermowell
- <sup>3</sup> All manual reset models comply with the CSD-1 requirement for Manual Reset. Devices with maximum Range of 200°F, 190°F 180°F are designed to meet local code requirements regarding maximum setpoints. Units having scale ranges above 240°F do not comply with ASME Section IV for boilers, use 240 Maximum range Aquastats.
- <sup>4</sup> Electrical Ratings  
 A Millivolt: 0.25 A @ 0.25 to 12 Vdc; AFL: 8 A @ 120 Vac/5.1 A @ 240 Vac ALR: 48 A @ 120 Vac/30.6 A @ 240 Vac  
 D Millivolt: 0.25 A @ 0.25 to 12 Vdc; AFL: 1.3 A @ 240 Vac/8 A @ 120 Vac; ALR: 48 A @ 120 Vac/30.6 A @ 240 Vac  
 B AFL: 2.6 A @ 120 Vac/1.3 A @ 240 Vac; ALR: 15.6 A @ 120 Vac/7.8 A @ 240 Vac  
 H AFL: 8 A @ 120 Vac/1.3 A @ 240 Vac; ALR: 48 A @ 120 Vac/30.6 A @ 240 Vac

FEATURES AND FUNCTIONS		NOTES	CROSS-REFERENCE
Differential Temperature (°F)	Electrical Ratings <sup>4</sup>	Notes	OEM or Trade Product Number
5 Fixed	A		
5 to 30	A		L4080B, L4080D Families, L4006A1058, L4006A1827, L4006A2015
5 Fixed	A		L4006A2023
5 to 30	A		
2 Fixed	B		
5 to 30	A		
5 to 30	A		
5 to 30	A		
	A	Canada Only	
	A		L4006E1091, L4006E1109, L4006E1117, L4006E1125, L4006E1133
	A		
	D		
	D	Bracket for Strap-On Mounting	
7	H	Canada Only	
5 to 30	A		
5 to 30	A		
5 to 30	A		
	A		L4008E1040, L4008E1248, L4008E1321
	A		L4008E1271, L4008E1313
	A	Meets Certain State Specific Boiler Inspector Requirements	
	A		
5 Fixed	A		
5 to 30	A		L4006B1189, L4008B1163
5	A		
5 to 30	A		L6006A1160, L6006A1269, L6006A1301, L6006A1327, L6006A1335
5 to 30	A	Horizontal Mount Only	L4006A1004
5 to 30	A	Includes Surface Mount Using 1/4" NPT Female Threads or Surface Mount Through Base of Case	L6006C1034, L6006C1059
5 to 30	A		L6008A1010
5 to 30	A		
5 to 30	A		

For a complete cross-reference, visit [www.customer.honeywell.com](http://www.customer.honeywell.com)

# Multi-Function Aquastat® Selection Guide

Product Number	FUEL		LOW LIMIT		HIGH LIMIT	
	Gas	Oil	Operating Range, Low Limit (°F)	Differential Temperature, Low Limit (°F)	Operating Range, High Limit (°F)	Differential Temperature, High Limit (°F)
L6081A1010	•	•	110 to 220		130 to 240	10 fixed
L6081A1036	•	•	110 to 220	10-25	130 to 240	10 fixed
L8148E1265	•				180 to 240	15 fixed
L8124E1016	•		110 to 220	10 to 25	130 to 240	10 fixed
L8148J1009	•				120 to 240	8 fixed
L7224U1002		•	110 to 220	10 to 25	130 to 240	5 to 20 adj.
L8124A1007		•	110 to 220	10 to 25	130 to 240	10 fixed
L8124C1003		•	110 to 220	10 to 25	130 to 240	10 fixed
L8124G1020		•	110 to 220	10 to 25	130 to 240	10 fixed
L8124L1011		•	110 to 220	10 to 25	130 to 240	10 fixed
L8148A1017		•			140 to 240	8 fixed

\* Replacement Sensors for the 7224U.

OS Number	Length
50001464-001	12"
50001464-004	36"
50001464-005	48"

FEATURES AND FUNCTIONS					CROSS-REFERENCE
Factory Stop (°F)	Switching Action	Anticipator Setting	Mounting	Notes	OEM Part Number
	SPDT		H		L6081A1069
	SPDT		H		L4081A1023, L4081A1148, L4081A1155, L4081A1171, L4081A1189, L4081A1197
	2 SPST: High Limit & Circulator	0.2 A	V		L8148E1158, L8148E1182, L8148E1216, L8148E1065
	2 SPST: High & Low Limit	0.2 A			
240	2 SPST: High Limit & Circulator	0.2 A	V/H		
	3 SPST: High and Low Limit, Circulator	0.1 A	V/H/F	Universal Oil, Digital Display and Settings, Used with Oil Burner Applications, EnviraCOM® Communications	All L8124A or C, L8148A or C, L7224A or C, L7248A or C, L8151A
		0.2 A	V		L8124A1015, L8124A1015, L8124A1049, L8124A1106, L8124A1114, L8124A1130, L8124A1155, L8124A1015
	2 SPST: High & Low Limit	0.2 A	H		L8124C1094, L8124C1102
	2 SPST: High & Low Limit	0.2 A	V		L8124G1004, L8124G1012
	2 SPST: High & Low Limit	0.2 A	H		L8124L1003, L8124L1029, L8124G1038, L8124G1046
240	2 SPST: High Limit & Circulator	0.2 A	H		L8148A1165, L8148A1157, L8148A1124, L8148A1090, L8148A1082, L8148A1009

For a complete cross-reference, visit [www.customer.honeywell.com](http://www.customer.honeywell.com)

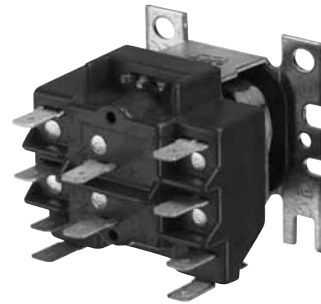
# Relays/Contactors/Transformers

Honeywell offers a complete range of relays, contactors and transformers for all your residential and commercial HVAC applications. All Honeywell products are designed to exceed safety and industry life cycle standards. In order to meet these criteria, a statistically significant sample of Honeywell products are tested to failure and to our stringent qualification requirements. This testing methodology enables Honeywell to verify that these products will exceed industry standards.

## Relays

Honeywell's switching relays are available in multiple configurations for various applications. For whatever you need — general purpose relays or electric heat relays — Honeywell has you covered.

- **General Purpose and Heavy-Duty Switching Relays** — R4222, R8222, R4228 and R8228 for use in refrigeration and air-conditioning equipment, appliances and vending machines
- **Time Delay Relay** — ST82 combines the R8222 or R8228 relay for use in compressor-run air conditioning and heat pump systems; this product features an electronic timer that delays blower shut off after the compressor has shut off.
- **Fully Enclosed Line and Low-Voltage Fan Relays** — R4225 and R8225 for control of line voltage fan motors and auxiliary circuits.



RELAYS										
Input Voltage/Coil Voltage	Switching	Product Number	Full Load Amp Rating	Frequency	Dimensions (in.) H x W x D	Electrical Connections (main)	Special Features			
24 Vac	DPST N.O.	R8228D1018	5.5	A	1 7/8 x 2 5/32 x 2 3/8	Q				
24 Vac	DPDT (1 P & 1 P Duty)	R8222V1003	12				2 7/32 x 2 1/16 x 2 9/16	Pilot duty		
	DPDT — Pilot Duty	R8222N1011								
	DPDT	R8222D1014						80 sec shut off delay		
DPDT	ST82D1004									
120 Vac	SPDT	R8222B1067			1 7/8 x 2 5/32 x 2 3/8					
	DPDT — Pilot Duty	R4222N1002								
	DPDT	R4222D1013								
208/240 Vac	DPDT	R4222D1021								
24 Vac	SPDT	R8225A1017			14		B	2 11/16 x 2 1/2 x 3 7/16	L	
	DPST N.O.	R8225D1003								
120 Vac	SPDT, 1 N.O., 1 N.C.	R4225A1008								
24 Vac	SPDT	R8228B1012	18	A		1 7/8 x 2 5/32 x 2 3/8		Q		
ELECTRIC HEAT RELAYS										
24 Vac	DPST	R8229A1005	7	B		2 3/16 x 2 3/32 x 2 1/4		CHS		Extra mounting hardware
		R8229A1021								
ELECTRIC FURNACE SEQUENCER										
24 Vac		R8330D1039	7.2	B		3 1/16 x 4 13/16 x 2 11/32		T		
ELECTRIC HEAT CONTACTOR										
24 Vac	DPST	R8246A1038	30		2 3/16 x 2 1/4 x 3 5/16	Q, S				

Frequency:	A — 60 Hz/50 Hz; B — 60 Hz, C — 50 Hz	SPST:	Single Pole Single Throw
Approvals:	UL, CSA	DPST:	Double Pole Single Throw
Temp Rating:	-20° F to +150° F; 115° F max for R8225	DPDT:	Double Pole Double Throw
Connectors:	CHS — Combination Head Screw; L — Leadwires; Q — Quick connect; T — Terminals	SPDT:	Single Pole Double Throw

## Transformers

Honeywell offers NEMA — standard DC20-1992 and general purpose transformers. These transformers are available with single or multiple input voltages and with foot, conduit and plate mounting options. Transformers with circuit breakers that can be manually reset by pressing a button are also available. Honeywell also designs transformers for specific environmental requirements and with specialized termination options.



TRANSFORMERS													
Electrical Ratings (VA)	Electrical Ratings (Input Voltage)	Product Number	NEMA Rated	Mounting	Main Connections	Secondary Connections	Frequency	Dimensions (in.) H x W x D	Special Features				
19 VA	120 Vac	AT20A1123	Yes	F	L	L	A	2 x 2 1/4 x 1 7/8					
40 VA	120 Vac	AT72D1006		P		S		3 7/32 x 2 7/32 x (1 1/16 into x 2 in. above plate)					
		AT72D1089		F		S		3 7/32 x 2 7/32 x 3 1/16					
		AT72D1188		P		L		3 7/32 x 2 7/32 x 2 15/16					
		AT72D1683		M		S		3 7/32 x 2 7/32 x 3 1/16	Available only in Canada				
		AT72D1956		M		L			Available only in Canada				
		AT72D1691		M		S							
AT72D1733	M	S											
48 VA	277 Vac	AT87A1189		F		L		L	B	2 15/16 x 2 7/32 x 2 1/4	Energy limiting overload protection		
	480 Vac	AT87A1155		F				L			Energy limiting overload protection		
50 VA	120/208/240 Vac	AT87A1106	M	S	Built-in protection; Primary winding burnout								
20 VA	120 Vac	AT120B1028	F	L	1 11/16 x 3 3/16 x 1 3/4		Metal end bells						
	120/208/240 Vac	AT120A1004	M	S	2 7/8 x 1 7/8 x 2 15/16		Metal end bells						
40 VA	120 Vac	AT140A1000	M	S	3 3/16 x 2 3/8 x 3 1/8		Metal end bells						
		AT140B1206	F	L	1 11/16 x 3 1/2 x 1 3/4		Plastic end caps						
		AT140A1018	M	S	3 3/16 x 2 3/8 x 3 1/8		Metal end bells						
		AT140B1214	F	L	1 11/16 x 3 1/2 x 1 3/4		Plastic end caps						
50 VA	120/208/240 Vac	AT150A1007	M	L	S		1 11/16 x 3 3/16 x 1 3/4	Metal end bells					
		AT150F1022	M		L	3 3/16 x 2 3/16 x 3 5/8	Button for resetting circuit breaker & metal end bells						
		208/277/480 Vac	AT150F1030		M	L	3 3/16 x 2 3/16 x 3 5/8	Button for resetting circuit breaker & metal end bells					
			AT150B1252		F	L, Q	L, Q	A	1 11/16 x 3 1/2 x 1 3/4	Plastic end caps			
		AT175A1008	M		S	3 3/16 x 2 3/8 x 3 5/8	Metal end bells						
75 VA	120/208/240 Vac	AT175F1023	M		L	L	B	3 3/16 x 2 3/16 x 3 15/16	Button for resetting circuit breaker & metal end bells				
		AT175F1031	M			L		3 3/16 x 2 3/16 x 3 15/16	Button for resetting circuit breaker & metal end bells				
	208/277/480 Vac	AT88A1005	F			L	A	2 15/16 x 2 3/16 x 3 5/16	Internally fused secondary for overload protection				
		AT88A1021	F			L							
	480 Vac	AT88A1047	F			L							
	Frequency:		A — 60 Hz/50 Hz; B — 60 Hz;										
Mounting:		C — Conduit ; F — Foot; P — Plate; M — Foot, Conduit, Plate (F models do not come with plate options)											
Connections:		L — Leadwires (9 in. to 13 in.); Q — Quick Connects; S — Screw Terminals											
Approval		UL, CSA											

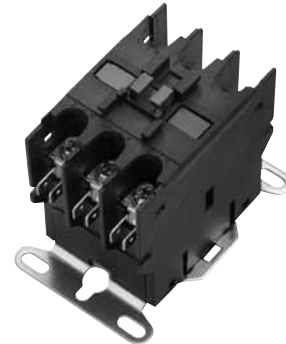
Heating/Cooling Devices

# Relays/Contactors/Transformers

## Contactors

Honeywell offers definite-purpose contactors for heating, cooling and refrigeration applications.

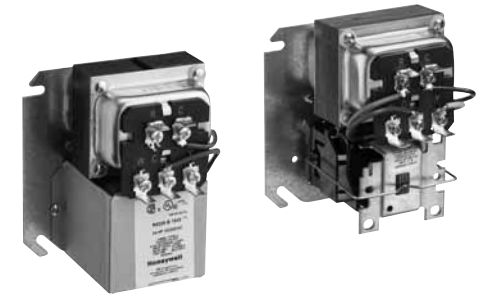
- Available in 1, 2, 3 and 4 pole configurations.
- Multiple input voltage range from 24/120/208/240 configurations.
- Available in 25, 30, 40, 50, 60, 75 and 90 Amp configurations.
- Meet ARI 780 and UL/CSA/CUR standards.
- Quick connects for coil termination.
- Hex screw and quick connects on units up to 30 A; lugs on units rated at 40 A and above.



ECONOMY CONTACTORS										Cross Reference Information			
Poles	Contact Ratings (AFL @ 240, 277, 480, 600 Vac)	Input Voltage/Coil Voltage	Product Number	Dimensions (in.) H x W x D	Main Connections	Coil Connections	Contact Ratings (Resistive @ 240, 277, 480, 600 Vac)	Cutler Hammer	Furnas	Mars			
1 with shunt	30	24 Vac	DP1030A1000	2 7/32 x 2 1/2 x 3 5/16	CHS	Q	48 A	C25CNB130T	45EG10AJA	91320, 17311			
2	30	24 Vac	DP2030A1003	3 1/4 x 3 5/8 x 3 7/8			48 A	C25BNB230T	45EG2OAJ	61354, 17321			
		120 Vac	DP2030B1002	2 7/32 x 3 5/16 x 2 5/32			40 A	C25BNB230A	45EG2OAF	61346, 17322			
2	40	208/240 Vac	DP2030C1001	2 7/32 x 2 1/2 x 3 5/16	LC	Q	40 A	C25BNB230B	45EG2OAG	61347, 17323			
		24 Vac	DP2040A1002	2 3/8 x 3 5/16 x 2			50 A	C25BNB240T	45GG20AJ	61355, 17421			
2	40	120 Vac	DP2040B1001		2 3/8 x 3 5/16 x 2	LC	Q	50 A	C25BNB240A	45GG20AF	61356, 17422		
		208/240 Vac	DP2040C1000	50 A				C25BNB240B	45GG20AG	61357, 17423			
POWERPRO CONTACTORS — ARI 780/790 RATED													
1 with shunt	25	24 Vac	DP1025A5005	2 7/32 x 2 1/2 x 3 5/16	CHS	Q	30 A	Not Available	45DG10AJA	61315			
1 with shunt	30		DP1030A5013	2 7/32 x 2 1/2 x 3 5/16	CHS		48 A	Not Available	45EG10AJA	13101, 61320, 61720			
	40		DP1040A5004	2 23/64 x 2 1/2 x 3 5/16	LC		50 A	Not Available	45GG10AJA	61330			
2	20	24 Vac	DP2020A5021	2 7/32 x 2 1/2 x 3 5/16	CHS	Q	30 A	Not Available	45CG20AJ	61310			
		120 Vac	DP2020B5038	2 7/32 x 2 1/2 x 3 5/16			30 A	Not Available	45CG20AF	61336, 14122			
		24 Vac	DP2030A5004	3 1/4 x 2 5/8 x 3 3/4			C25DND230T	45EG2OAJ	61345, 13104, 91321, 60510				
		24 Vac	DP2030A5012	3 1/4 x 2 5/8 x 3 3/4			60510						
		120 Vac	DP2030B5003	2 7/32 x 3 5/16 x 2 5/32			C25DND230A	45EG2OAF	61346, 13105,				
		120 Vac	DP2030B5011	2 5/16 x 3 5/16 x 2 5/32			60031						
	30	208/240 Vac	DP2030C5002	2 7/32 x 2 1/2 x 3 5/16	CHS	Q	48 A	C25DND230B	45EG2OAG	61347, 13106, 60512, 60032			
		208/240 Vac	DP2030C5010				Not Available	Not Available	6,051,291,323				
		277 Vac	DP2030D5001				Not Available	Not Available	60153,				
		24 Vac	DP2040A5003				2 23/64 x 3 3/16 x 1 15/16	LC	Q	50 A	C25DNF240T	45GG20AJ	13107 91421, 61355, 61755, 60525,
		120 Vac	DP2040B5002							C25DNF240A	45GG20AF	13108, 91422, 61356, 61756,	
		208/240 Vac	DP2040C5001							C25DNF240B	45GG20AG	13109, 91423, 61357, 61757, 60527, 14423	
3	30	24 Vac	DP3030A5003	3 7/64 x 3 5/8 x 2 13/32	CHS	Q, S	40 A	C25DND330T	42BF35AJ	61430, 13113, 60515, 13007, 91331			
		120 Vac	DP3030B5002				C25DND330A	42BF35AF	61431, 13114, 91332				
		208/240 Vac	DP3030C5001				C25DND330B	42BF35AG	61432, 13115, 91333, 60517, 13009				
		24 Vac	DP3040A5002				C25DNF340T	42CF35AJ	60530, 14423, 61445, 13013 91431				
		120 Vac	DP3040B5001				C25DNF340A	42CF35AF	61446				
		208/240 Vac	DP3040C5000				C25DNF340B	42CF35AG	60532, 60182, 61447, 13015, 91433				
	40	24 Vac	DP3050A5001	3 7/64 x 3 5/8 x 2 13/32	LC	Q, S	63 A	C25DNJ350T	42DF35AJ	61460, 13619, 91531			
		120 Vac	DP3050B5000				C25DNJ350A	42DF35AF	61461				
		208/240 Vac	DP3050C5009				C25DNJ350B	42DF35AG	60217, 60202, 61462, 13621, 91533				
		24 Vac	DP3060A5000				C25FNF360T	42EF35AJ	61470 13625 91631				
		120 Vac	DP3060B5009				C25FNF360A	42EF35AF	61471				
		208/240 Vac	DP3060C5008				C25FNF360B	42EF35AG	60227, 60207, 61472, 13627, 91633				
75	24 Vac	DP3075A5016	4 7/16 x 5 x 3 3/4	LC	Q, S	95 A	C25FNF375T	42FE35AJ	60235, 61475, 13240, 91731				
	120 Vac	DP3075B5015				C25FNF375A	42FE35AF	60237, 61476					
	208/240 Vac	DP3075C5014				C25FNF375B	42FE35AG	60245, 61477, 13242, 91733					
	120 Vac	DP3090B5006				C25GNF390A	42GE35AF	61491					
	208/240 Vac	DP3090C5005				C25GNF390B	42GE35AG	60247, 61492, 13262					
	24 Vac	DP4040A5001				C25ENF440T	42CF25AJ	61450, 13016					
4	40	120 Vac	DP4040B5000	2 5/8 x 3 3/4 x 3 7/64	LC	Q, S	50 A	C25ENF440A	42CF25AF	61451			
		208/240 Vac	DP4040C5009				C25ENF440B	42CF25AG	61452				
ELECTRIC HEAT CONTACTOR													
2	30	24 Vac	R8246A1038	2 3/16 x 2 5/16 x 3 5/16	Q, S	TCS, Q	48 A @ 240 Vac, 277 Vac	SPECIAL FEATURES: First pole resistive only, second pole resistive/inductive combined; ARI 780/790 rated					
Connectors:							BHS — Binding Head Screw; Q — Quick Connect; SS — Sems Screw; CHS — #10-32 Combination Head Screw; S — #6 Screw; TCS — Terminal Clamp Screw; LC — Lug Connector			Approvals:		UL, CSA	
Temp Rating:							-4° F to 149° F			ARI - 780:		500,000 cycle mechanical life; 200,000 cycle electrical life; 10,000 cycle recycle life	

## Fan Centers

For fan centers (relay and transformer combination), R8285 and R8239 NEMA rated units offer low-voltage control of line-voltage fan motors and auxiliary circuits in heating, cooling or air-conditioning systems.



FAN CENTERS									
Electrical Ratings (VA)	Electrical Ratings (Input Voltage)	Switching	Product Number	NEMA Rated	Dimensions (in.) H x W x D	Main Connections	Secondary Connections	Frequency	Special Features
40 VA	120 Vac	DPDT	R8239B1043	Yes	4 1/2 x 4 3/16 x 3 3/32	L	L	A	Super Tradeline*
		DPST	R8239D1007						Available only in Canada
		DPST (1 Power, 1 Pilot)	R8239D1015						Tradeline
		SPDT	R8239A1052						Tradeline
50 VA	120/208/240 Vac	DPDT	R8239B1076	No	4 3/16 x 4 1/2 x 2 13/16	L	L	A	Super Tradeline
40 VA	120 Vac	SPDT	R8285A1048						Tradeline
50 VA	120/208/240 Vac	DPDT	R8285B1053						Tradeline
50 VA	120 Vac	DPDT	R8285D5001						Tradeline
Frequency:		A — 60 Hz/50 Hz; B — 60 Hz		SPST:		Single Pole Single Throw			
Approvals:		UL, CSA		DPST:		Double Pole Single Throw			
Temp Rating:		-20° F to +105° F		DPDT:		Double Pole Double Throw			
Connectors:		L — Leadwires		SPDT:		Single Pole Double Throw			
Mounting:		Standard 4 x 4 in. junction box							
* Super Tradeline models include extra hardware.									

## Defrost Controller

Choose the ST74 low-voltage time/temperature defrost controller for heat pumps.

- Resets the defrost cycle by remote contact closure.
- Mounts in outdoor section of heat pump.
- Utilizes special moisture barrier to protect circuitry.



DEFROST CONTROLLER			
Operation	Time On	Time Off — Selectable	Product Number
Remote Contact Closure	10 min.	50/70/90 min.	ST74A1053

## Auxiliary Switches

Honeywell Auxiliary Switches work Honeywell models of 3-pole contactors.



AUXILIARY SWITCHES						
Product Number	Circuits	Configuration	Dimensions (in.) H x W x D	Contact Ratings (Resistive)	Maximum (inrush) Current at 120/240/480/600 V	Use With
DP3AUX-1NO	1	Normally Open snap-on	2 26/32 x 2 17/32 x 7/16	10 A	60/30/15/12 Amps	DP3030 — DP3090 Contactors
DP3AUX-1NC	1	Normally Closed snap-on				
DP3AUX-1NO-1NC	2	Normally Closed/Normally Open snap-on				
DP3AUX-2NO		Normally Open snap-on				
DP3AUX-2NC		Normally Closed snap-on				



**Learn More**

Call toll-free 1-800-328-5111,  
e-mail [info@honeywell.com](mailto:info@honeywell.com) or  
visit [customer.honeywell.com](http://customer.honeywell.com).

**Automation and Control Solutions**

In the U.S.:

Honeywell

1985 Douglas Drive North  
Golden Valley, MN 55422-3992

In Canada:

Honeywell Limited

35 Dynamic Drive

Toronto, Ontario M1V 4Z9

[www.honeywell.com](http://www.honeywell.com)

**Honeywell**